

SMOKY



RANCH RED ANGUS

BULL & FEMALE SALE FRIDAY, APRIL 8 - 1 PM

AT THE RANCH MONUMENT, KANSAS





SMOKY Y RANCH

Annual Production Sale

Friday, April 8, 2016 * 1:00 P.M. CST

At the Ranch * South of Monument, KS

- OFFERING -

**82 Red Angus Yearling Bulls
75 Red Angus Commercial Pairs
45 Black Angus Commercial Females**

Sale Preview and dinner - Thursday Evening

Video previews available on DVAuction.com

Auctioneer: Sonny Booth (918) 533-5587
Sale Management:



Ringmen:
Guy Peverley, *The Stock Exchange* (785) 456-4390
Craig Talkington, *The Stock Exchange*, (785) 623-1789
Stephen Russell, *KS Livestock Assoc.*, (785) 458-2650
Sale Consultant & Photography: Kent McCune (817) 602-8629



Sale Terms & Conditions: All bulls sell under the suggested terms and conditions set forth by the Red Angus Association of America.

All announcements from the sale block take precedence over any printed material.

Complimentary Meal - 11:30 a.m.

Accommodations: Sleep Inn, Oakley (785) 671-1111



Sale Location: 17 miles south of Monument, KS on C.R. 350, cross the Smoky River, then 1 mi. West... Watch for signs, see map on page 20.

Delivery: Bulls will be delivered free in a 200 mi. radius from the ranch. We'll assist with trucking arrangements on any purchases outside of the area.

Fertility: All bulls have passed a breeding soundness exam and are guaranteed to be breeders.

Smoky Y Ranch Red Angus

1206 C.R. 340, Monument, KS 67747

syredangus@gmail.com

smokyranchedangus.com

Cody Younkin (303) 621-4970

Kelly Younkin (785) 672-2354

Catalog Prepared by: Peverley Productions
teresapeverley@gmail.com - 785-456-4428



Special Thanks to Paul Ritter, DVM, Monument Station
Ultrasounding.

WELCOME TO SMOKY Y RANCH RED ANGUS

Dear Breeders and Friends,

On behalf of our entire family, we invite you to our Third Production Sale, consisting of 82 Red Angus bulls, 75 commercial Red Angus pairs, 45 Black Angus commercial heifers. Although our family has been in the cattle and ranching businesses for nearly 40 years, we are relatively new in the Red Angus seedstock industry. We have acquired the Camp 1A and Windy Hill herds in their entirety over the last few years. We feel that with these purchases, we are moving in the right direction toward being one of the constant and reliable bull and female suppliers to the industry.

Since 1978, our grandfather and father have owned and operated Smoky Y Ranch. They ran and continue to run a commercial herd with great success. We continue to utilize the best bulls we can find throughout North America for use in this herd, and it serves as the background for our decision to be in the registered business.

We hope you can be with us for our sale on April, 8. We are hosting a preview gathering and supper on Thursday evening before the sale. Everyone is invited, and the sale offering will be on display.

Please contact us if there is anything we can do to add any information to the lots that sell. We are happy to be working with Keith Kisse, and Kent McCune, in regards to the sale, so contact them or watch and bid through DV Auctions.

Thank you for your interest in our program, and we hope to see you on sale day.

Sincerely,

Younkin Family

Cody & Kelly Younkin



This sale will be broadcast live on the internet.

DVAuction
Broadcasting Real-Time Auctions

Real time bidding & proxy bidding available.

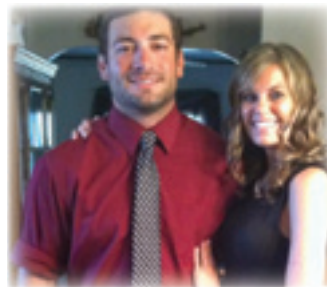
To bid from your computer at home during the sale, complete this simple two step process:

1) Visit the DV Auction web site at www.dvauction.com. Register by entering a User Name and Password. Then enter your personal information on the next screen.

2) Click on "My Profile" and fill out the banking and lending information requested. Click on "Apply to Bid" and select "Smoky Y Red Angus Sale" from the list of sales and click "Apply".

DVAuction will contact you to let you know that you have been approved to bid and buy at the sale "live" from your computer at home. We will also provide you with a buyer number for the sale.

Younkin Family



Thanks to our Ranch hand Adam Hickel and Annie Weber.



Thanks to our Ranch hand Andy Huffman and Family

SMOKY Y RANCH RED ANGUS



LOT 1

1 SMOKY Y RED SKY 572C

2/10/15 1A-100% 3503074

RED NORTHLINE FAT TONY 605U	RED SVR GANGSTER 14S	Data
PZC TMAS RED SKY 2794	RED NORTHLINE RUBY 0305N	
WHITESTONE LANA V150	PERKS ADVANCER 9088	WW 700
	WSRA LANA P070	YW 1368
RED WINDY HILL CASH 917W	RED SOO LINE CASH 7419	%IMF 4.97
WINDY HILL BLACKWOOD 1221Z	CROWFOOT BARBARA 4190P	REA 14.66
WINDY HILL MS STOCKMAN606S	RED PEBBLERIDGE BLACK SUNRIS	FAT 0.37
	RED LLB BLACKWOOD 242M	

CED	BW	WW	YW	MILK	ME	HPG	CEM	STAY	MARB	YG	CW	REA	FAT
1	1.4	70	108	15	-8	7	4	10	0.58	0.01	36	0.24	-01

Selling full possession and 2/3 semen interest. Smoky Y Red Sky 572Y is an extraordinary bull for phenotype, genotype and trait measurement across the board. He is one of the best Red Angus bulls to sell this year in terms of a total package herd sire. He is perfectly constructed with a most dynamic visual appraisal. He is big boned, powerfully driven and sets all four feet down with authority and correctness. His structure supports tremendous performance and muscle mass. His ultrasound data indicates a combination of top ratio of both IMF and REA. He is a complete individual with a combination of all the traits breeders are looking for.

His sire, PZC TMAS Red Sky 2794, is among the breed's most noted proven sires. The son of Red Northline Fat Tony 605U and the cornerstone donor, Whitestone Lana V150, has exceeded all expectations as a monumental genetic contributor to the Smoky Y herd. The consistency and genetic reach of this great sire is obviously noted when appraising the replacement females and young two year old females now with their first calves. His influence will become more and more important to the industry as time goes on.

His dam, Windy Hill Blackwood 1221Z, is the top ranking Cash daughter in the Smoky Y breeding herd. She has emerged as one of the most efficient producers from the entire Windy Hill breeding herd.

SMOKY Y RANCH RED ANGUS



2 SMOKY Y RED SKY 508C

2/07/15 1A-100% 3503069

RED NORTHLINE FAT TONY 605U		RED SVR GANGSTER 14S		Data									
PZC TMAS RED SKY 2794		RED NORTHLINE RUBY 0305N		BW 81									
WHITESTONE LANA V150		PERKS ADVANCER 9088		WW 617									
		WSRA LANA P070		YW 1229									
RED MRLA 61X		RED MRLA ECONOMY 810		%IMF 3.75									
RED WINDY HILL JULIE 1254Z		RED MRLA MISS 580U		REA 14.11									
WINDY HILL MS KNIGHT 426P		RED YY RED KNIGHT 640F		FAT 0.30									
		RED CUTARM MINRVA 255B											
CED	BW	WW	YW	MILK	ME	HPG	CEM	STAY	MARB	YG	CW	REA	FAT
6	-1.0	45	70	18	-6	8	6	13	0.34	-0.11	10	0.13	-0.03

Smoky Y Red Sky 508C is one of the most impressive sons of PZC TMAS Red Sky 2794. He, along with eight of his 3/4 brothers, sells as lots 2 through 10. This genetic combination has proven to be one of the best genetic blends at the Smoky Y Ranch. The Red MRLA 61X daughters and dams of lots 2 through 10 in this sale catalog are among the best producing females in the program.

This breeding bull is in the top 8% for ME and top 11% for YG. His actual performance and scan data indicate a complete and highly valued herd bull.

3 SMOKY Y RED SKY 506C

2/18/15 1A-100% 3503075

RED NORTHLINE FAT TONY 605U		RED SVR GANGSTER 14S		Data									
PZC TMAS RED SKY 2794		RED NORTHLINE RUBY 0305N		BW 91									
WHITESTONE LANA V150		PERKS ADVANCER 9088		WW 698									
		WSRA LANA P070		YW 1322									
RED MRLA 61X		RED MRLA ECONOMY 810		%IMF 3.45									
RED WINDY HILL MISS 1209Z		RED MRLA MISS 580U		REA 14.79									
WINDY HILL MS GRAVITY 66N		RED EGGEN GRAVITY 28J		FAT 0.36									
		RED EGGEN HIGH MARK 27H MS 6											
CED	BW	WW	YW	MILK	ME	HPG	CEM	STAY	MARB	YG	CW	REA	FAT
2	1.7	62	92	17	-8	8	5	12	0.24	-0.02	27	0.21	-0.01

Selling full possession and 2/3 semen interest. Smoky Y Red Sky 506C is a member of the largest sire group in the sale offering, the sons of PZC TMAS Red Sky 2794. This bull selling as Lot 3 is one that excels in all traits and in all standards of visual appraisal. He is a big performer, scanned a big 14.79 REA and 3.45 IMF. All pieces and parts of the bull indicate exceptional across the board acceptability, and he sells as a real herd sire prospect.

The genetic combination of the 8 three-quarter brothers make this a highly uniform group of bulls. All the bulls in the group are from daughters of Red MRLA 61X, the highly respected Canadian sire that has become known as one of the strongest paternal lines for good milking Red Angus females. Muscle, maternal, carcass and profile are wrapped up into an excellent genetic package with this yearling breeding bull.

SMOKY Y RANCH RED ANGUS



LOT 5

4 SMOKY Y RED SKY 553C

3/25/15 1A-100% 3503076

RED NORTHLINE FAT TONY 605U	RED SVR GANGSTER 14S	Data
PZC TMAS RED SKY 2794	RED NORTHLINE RUBY 0305N	
WHITESTONE LANA V150	PERKS ADVANCER 9088	65
	WSRA LANA P070	WW
		579
		YW
RED MRLA 61X	RED MRLA ECONOMY 810	1140
RED WINDY HILL ERICA 1207Z	RED MRLA MISS 580U	%IMF
RED WINDY HILL ERICA 719T	RED BAR-E-L NAPOLEON 4N	4.28
	RED EGGEN BASICINSTINCT MS 4	REA
		12.85
		FAT
		0.42

CED	BW	WW	YW	MILK	ME	HPG	CEM	STAY	MARB	YG	CW	REA	FAT
8	-3.1	34	50	23	-8	7	5	13	0.44	-0.04	-5	-0.02	.01

Smoky Y Red Sky 553C has emerged as one of the top bulls for calving ease and IMF. With a 65 pound birth weight and a -3.1 BW EPD he is an ideal choice for use on heifers. The 4.28 IMF is one of the strong IMF scans in the entire bull offering. He is genetically derived from the same growth genetics as the 8 other three-quarter brothers that sell as lots 2 through 10.

The sons of PZC TMAS Red Sky 2794 are an impressive group of bulls, and this bull that sells as lot 4 is an excellent bull for use on heifers, as well.

5 SMOKY Y RED SKY 562C

3/09/15 1A-100% 3503077

RED NORTHLINE FAT TONY 605U	RED SVR GANGSTER 14S	Data
PZC TMAS RED SKY 2794	RED NORTHLINE RUBY 0305N	
WHITESTONE LANA V150	PERKS ADVANCER 9088	92
	WSRA LANA P070	WW
		653
		YW
RED MRLA 61X	RED MRLA ECONOMY 810	1177
RED WINDY HILL ROXIE 1215Z	RED MRLA MISS 580U	%IMF
RED WINDY HILL MS STOCKMAN61	RED PEBBLERIDGE BLACK SUNRIS	3.27
	RED HOWE MS ROXIE DDH 133E	REA
		14.79
		FAT
		0.31

CED	BW	WW	YW	MILK	ME	HPG	CEM	STAY	MARB	YG	CW	REA	FAT
3	0.7	48	66	19	-8	8	4	10	0.21	-0.12	10	0.21	-0.02

Smoky Y Red Sky 562C is one of the good sons of PZC TMAS Red Sky 2794. One of the best genetic combinations in the Smoky Y program is the one that is found in the pedigree of the bulls that sell as lots 2 through 10. This bull excels in all economically important traits that are in demand today. Balanced genotype and phenotype, solid performance, great combination ultrasound readings and proven ancestral background. Some of the top bulls in the program have been historically from this genetic makeup.

All Smoky Y bulls are fully guaranteed and will be ready for heavy service at sale time.

SMOKY Y RANCH RED ANGUS



6 SMOKY Y RED SKY 513C

3/10/15 1A-100% 3503065

RED NORTHLINE FAT TONY 605U	RED SVR GANGSTER 14S	Data
PZC TMAS RED SKY 2794	RED NORTHLINE RUBY 0305N	
WHITESTONE LANA V150	PERKS ADVANCER 9088	WW 732
	WSRA LANA P070	YW 1399
RED MRLA 61X	RED MRLA ECONOMY 810	%IMF 3.16
WINDY HILL BARBARA 1260Z	RED MRLA MISS 580U	REA 13.61
CROWFOOT BARBARA 4190P	OCC MOONSHINE 740M	FAT 0.46
	RED CROWFOOT BRNDINA 1407L	

CED	BW	WW	YW	MILK	ME	HPG	CEM	STAY	MARB	YG	CW	REA	FAT
4	1.2	66	106	14	-8	7	6	11	0.22	0.12	35	0.13	.02

Smoky Y Red Sky 513C is one of the high performing and high growth numbered bulls in the entire group of sons sired by PZC TMAS Red Sky 2794. He ranks in the top 15% for YW and top 5% for ME EPDs. Real beef bulls have been generated from this genetic crossing from the best maternal and performance lines from the Windy Hill cow families. Each and every year, the breeding herd becomes more consistent and breed-leading. The offering of bulls this year is an impressive group, and this growth-oriented bull is one to add pounds and muscle to calf crops.

This bull puts it all together and will be ready for service on sale day.

7 SMOKY Y RED SKY 579C

2/17/15 1A-100% 3503070

RED NORTHLINE FAT TONY 605U	RED SVR GANGSTER 14S	Data
PZC TMAS RED SKY 2794	RED NORTHLINE RUBY 0305N	
WHITESTONE LANA V150	PERKS ADVANCER 9088	WW 685
	WSRA LANA P070	YW 1370
RED MRLA 61X	RED MRLA ECONOMY 810	%IMF 4.22
RED WINDY HILL FLOWER 1250Z	RED MRLA MISS 580U	REA 15.27
RED WINDY HILL FLOWER 910W	RED LLLL CH CANYON T100	FAT 0.40
	WINDY HILL MS KNIGHT 508R	

CED	BW	WW	YW	MILK	ME	HPG	CEM	STAY	MARB	YG	CW	REA	FAT
4	0.2	57	88	20	-7	8	5	12	0.41	-0.02	23	0.20	-0.00

Smoky Y Red Sky 579C is another one of the high performing sons of PZC TMAS Red Sky 2794. 1370 adjusted yearling weight, 4.23 IMF and 15.27 REA, make this an ideal bull for selected growth and carcass traits. He represents the best that the program can create, and he, along with the other three-quarter and half brothers are among the top sire group available within the industry this year. This sound-footed, free-wheeling herd bull is ready for the test to sire heavy calves at weaning with breeding value to return more profit when carried all the way to harvest.

Decades of selective breeding have added consistency of product to the bull offering this year at Smoky Y Red Angus.

SMOKY Y RANCH RED ANGUS



PZC TMAS RED SKY 2794 SIRE OF LOTS 1-20

8 SMOKY Y RED SKY 509C

2/07/15 1A-100% 3503071

RED NORTHLINE FAT TONY 605U	RED SVR GANGSTER 14S	Data											
PZC TMAS RED SKY 2794	RED NORTHLINE RUBY 0305N	BW											
WHITESTONE LANA V150	PERKS ADVANCER 9088	80											
	WSRA LANA P070	WW											
		645											
RED MRLA 61X	RED MRLA ECONOMY 810	YW											
WINDY HILL BLACKBIRD 1235Z	RED MRLA MISS 580U	1310											
WINDY HILL BLACKBIRD 1036X	RED WINDY HILL STOCKMAN 706T	%IMF											
	WINDY HILL BLACKBIRD 738T	4.78											
		REA											
		13.61											
		FAT											
		0.29											
CED	BW	WW	YW	MILK	ME	HPG	CEM	STAY	MARB	YG	CW	REA	FAT
5	-1.0	54	82	21	-8	8	5	12	0.44	-0.06	17	0.08	-0.03

Smoky Y Red Sky 509C is the half and three-quarter brother to lots 1 through 20. The sons of the great breeding sire are from the top females in the Smoky Y breeding herd, and the bulls made available from the breeding herd are a highly uniform group of individuals. The data and performance is outstanding with this young bull, and he will be ready for heavy service at sale time.

9 SMOKY Y RED SKY 538C

3/05/15 1A-100% 3503078

RED NORTHLINE FAT TONY 605U	RED SVR GANGSTER 14S	Data											
PZC TMAS RED SKY 2794	RED NORTHLINE RUBY 0305N	BW											
WHITESTONE LANA V150	PERKS ADVANCER 9088	88											
	WSRA LANA P070	WW											
		673											
RED MRLA 61X	RED MRLA ECONOMY 810	YW											
RED WINDY HILL MAY 1204Z	RED MRLA MISS 580U	1170											
RED WINDY HILL MAY 1038X	RED WINDY HILL STOCKMAN 706T	%IMF											
	DIAMOND T RIO'S MAY 224 07	4.67											
		REA											
		15.43											
		FAT											
		0.38											
CED	BW	WW	YW	MILK	ME	HPG	CEM	STAY	MARB	YG	CW	REA	FAT
3	1.0	56	76	19	-8	8	5	11	0.50	-0.06	16	0.28	.00

Smoky Y Red Sky 538C is one of the good sons of PZC TMAS Red Sky 2794. He is one of the young bulls bred similarly to all the other bulls selling as Lots 1 through 20. Smoky Y Red Sky 538C has one of the top IMF and REA scores in the offering. He is a strong combination of red meat coupled with a good marbling scan.

10 SMOKY Y RED SKY 542C

2/10/15 1A-100% 3503050

RED NORTHLINE FAT TONY 605U	RED SVR GANGSTER 14S	Data											
PZC TMAS RED SKY 2794	RED NORTHLINE RUBY 0305N	BW											
WHITESTONE LANA V150	PERKS ADVANCER 9088	80											
	WSRA LANA P070	WW											
		617											
RED MRLA 61X	RED MRLA ECONOMY 810	YW											
RED WINDY HILL MISS 1222Z	RED MRLA MISS 580U	1191											
WINDY HILL M NAPOLEON 522R	RED BAR-E-L NAPOLEON 4N	%IMF											
	RED EGGEN 272D 12G MISS 42J	4.09											
		REA											
		15.66											
		FAT											
		0.31											
CED	BW	WW	YW	MILK	ME	HPG	CEM	STAY	MARB	YG	CW	REA	FAT
5	-0.9	45	70	21	-8	7	6	13	0.39	-0.17	11	0.30	-0.03

Smoky Y Red Sky 542C is bred like all the bulls selling as lots 1 through 20. His dam is from the Windy Hills herd that was purchased entirely by Smoky Y Ranch. Smoky Y Red Sky 542C is another one of the good bulls that is a strong combination of both REA and IMF. Top performance and carcass traits sell in tandem here.

SMOKY Y RANCH RED ANGUS



LOT 11

11 SMOKY Y RED SKY 565C

2/17/15 1A-100% 3503093

RED NORTHLINE FAT TONY 605U RED SVR GANGSTER 14S
PZC TMAS RED SKY 2794 RED NORTHLINE RUBY 0305N
 WHITESTONE LANA V150 PERKS ADVANCER 9088
 WSRA LANA P070

RED PEBBLERIDGE BLACK SUNRIS WIWA CREEK STOCKMAN 14'99
RED WINDY HILL BELLE 722T CALLAMERE ROSEGAY 2E
 RED PASQUIA BELLE 22N RED KBJ KNIGHT 936L
 RED PASQUIA MISS MARK 23K

CED	BW	WW	YW	MILK	ME	HPG	CEM	STAY	MARB	YG	CW	REA	FAT	Data
4	-1.1	50	85	16	-8	7	5	9	0.55	-0.07	20	0.20	-0.2	BW 83 WW 617 YW 1282 %IMF 4.81 REA 14.57 FAT 0.34

Smoky Y Red Sky 565C has the same distinctive stamp as all the sons of PZC TMAS Red Sky 565C. He traces back to the Belle cow family that was a part of the Windy Hill breeding program. Smoky Y Red Sky 565C is one of the powerhouse bulls that is included in the offering. 4.81 IMF with a 14.57 REA make this a stand out breeding bull. He adds ample carcass value to the genotype and phenotype.

13 SMOKY Y RED SKY 537C

2/23/15 1A-100% 3503072

RED NORTHLINE FAT TONY 605U RED SVR GANGSTER 14S
PZC TMAS RED SKY 2794 RED NORTHLINE RUBY 0305N
 WHITESTONE LANA V150 PERKS ADVANCER 9088
 WSRA LANA P070

RED WINDY HILL CASH 917W RED SOO LINE CASH 7419
RED WINDY HILL FLOWER 1230Z CROWFOOT BARBARA 4190P
 WINDY HILL MS KNIGHT 508R RED YY RED KNIGHT 640F
 RED WINDY HILL MS 151N

CED	BW	WW	YW	MILK	ME	HPG	CEM	STAY	MARB	YG	CW	REA	FAT	Data
5	-1.6	51	78	19	-6	7	6	13	0.38	-0.05	15	0.14	-0.1	BW 61 WW 560 YW 1016 %IMF 2.43 REA 14.17 FAT 0.20

Smoky Y Red Sky 537C is the three quarter brother to lots 1 and 12. Power and breed quality are abundantly available in this breeding bull. With a 1339 adjusted yearling weight, with a 15.02 REA, this is yet another one of the red meat breeding bulls from the dominant sire group in the offering. TW.

12 SMOKY Y RED SKY 534C

2/20/15 1A-100% 3503073

RED NORTHLINE FAT TONY 605U RED SVR GANGSTER 14S
PZC TMAS RED SKY 2794 RED NORTHLINE RUBY 0305N
 WHITESTONE LANA V150 PERKS ADVANCER 9088
 WSRA LANA P070

RED WINDY HILL CASH 917W RED SOO LINE CASH 7419
WINDY HILL BLACKBIRD 1223Z CROWFOOT BARBARA 4190P
 RED WINDY HILL MS 30X 153N RED LAZY MC THRIFTY X 22L
 RED HOWE MS BLACKBIRD DDH 15

CED	BW	WW	YW	MILK	ME	HPG	CEM	STAY	MARB	YG	CW	REA	FAT	Data
2	1.6	65	101	15	-8	7	5	10	0.14	-0.04	33	0.30	-0.1	BW 93 WW 705 YW 1339 %IMF 2.93 REA 15.02 FAT 0.33

Smoky Y Red Sky 534C is a three quarter brother to lots 1 and 13. They are from daughters of Red Windy Hill Cash 917W. Smoky Y Red 537C is one of the moderately framed bulls in the offering. He is packed and stacked with muscle mass and performance.

14 SMOKY Y RED SKY 570C

2/17/15 2-100% 3503064

RED NORTHLINE FAT TONY 605U RED SVR GANGSTER 14S
PZC TMAS RED SKY 2794 RED NORTHLINE RUBY 0305N
 WHITESTONE LANA V150 PERKS ADVANCER 9088
 WSRA LANA P070

WIWA CREEK RITO 43'06 BAR SS RITO 113K
WINDY HILL ERICA 811U WIWA CREEK EVERGREEN 23J 37'
 RED WINDY HILL MS KNIGHT 513 RED YY RED KNIGHT 640F
 RED WINDY HILL MS KING 69N

CED	BW	WW	YW	MILK	ME	HPG	CEM	STAY	MARB	YG	CW	REA	FAT	Data
0	1.3	47	71	20	-8	7	4	10	0.48	-0.04	15	0.17	-0.0	BW 89 WW 632 YW 1236 %IMF 4.35 REA 14.37 FAT 0.38

Black/Red Carrier. This son of PZC TMAS Red Sky 570C is a black/red carrier that has one of the strongest performance and scan records in the sale. This breeding bull is yet another strong combination of performance and ultrasound data. A real red meat Black/Red carrier Angus bull.

SMOKY Y RANCH RED ANGUS

15 SMOKY Y RED SKY 540C

2/06/15 1A-100% 3503084

RED NORTHLINE FAT TONY 605U PZC TMAS RED SKY 2794 WHITESTONE LANA V150	RED SVR GANGSTER 14S RED NORTHLINE RUBY 0305N PERKS ADVANCER 9088 WSRA LANA P070	Data BW 56 WW 544 YW 1134 %IMF 3.91 REA 13.99 FAT 0.43												
WIWA CREEK RITO 43'06 WINDY HILL KAE 933W RED WINDY HILL M NAPOLAEON 53	BAR SS RITO 113K WIWA CREEK EVERGREEN 23J 37' RED BAR-E-L NAPOLEON 4N RED EGGEN ARAB 23K MISS 64M													
CED	BW	WW	YW	MILK	ME	HPG	CEM	STAY	MARB	YG	CW	REA	FAT	
5	-0.2	44	67	18	-8	7	5	9	0.36	-0.06	10	0.12	-0.01	

Smoky Y Red Sky 540C is a paternal brother to Lots 1 through 20. This is a calving ease bull with a 56 pound birth weight with a -0.2 BW EPD. Strong statistics across the board with years of the best bloodlines that make up this individual that sells as lot 15. TW.

16 SMOKY Y RED SKY 517C

2/18/15 1A-100% 3503083

RED NORTHLINE FAT TONY 605U PZC TMAS RED SKY 2794 WHITESTONE LANA V150	RED SVR GANGSTER 14S RED NORTHLINE RUBY 0305N PERKS ADVANCER 9088 WSRA LANA P070	Data BW 90 WW 529 YW 1117 %IMF 3.70 REA 13.39 FAT 0.32												
WIWA CREEK RITO 43'06 WINDY HILL ERICA 935S WINDY HILL MS NAPOLAEON611S	BAR SS RITO 113K WIWA CREEK EVERGREEN 23J 37' RED BAR-E-L NAPOLEON 4N RED WINDY HILL MS KING 69N													
CED	BW	WW	YW	MILK	ME	HPG	CEM	STAY	MARB	YG	CW	REA	FAT	
2	0.4	35	53	23	-8	7	4	10	0.34	-0.11	3	0.05	-0.02	

Smoky Y Red Sky 517C is the half or three quarter brother to lots 1 through 20. The son of PZC TMAS Red Sky 2794 adds more pedigree and actual performance to the genetic profile of the half brothers that sell.

17 SMOKY Y RED SKY 560C

2/05/15 1A-100% 3503081

RED NORTHLINE FAT TONY 605U PZC TMAS RED SKY 2794 WHITESTONE LANA V150	RED SVR GANGSTER 14S RED NORTHLINE RUBY 0305N PERKS ADVANCER 9088 WSRA LANA P070	Data BW 78 WW 552 YW 1158 %IMF 5.78 REA 10.98 FAT 0.35												
RED WINDY HILL STOCKMAN 706T RED WINDY HILL MINOLA 1026X WINDY HILL MS NAPOLAEON633S	RED PEBBLERIDGE BLACK SUNRIS SOO LINE MS RABSTAR 5028 RED BAR-E-L NAPOLEON 4N RED RUTHE MINOLA 133A													
CED	BW	WW	YW	MILK	ME	HPG	CEM	STAY	MARB	YG	CW	REA	FAT	
3	-0.2	46	70	17	-8	7	4	11	0.77	0.08	11	-0.21	.00	

Smoky Y Red Sky 560C is the son of PZC TMAS Red Sky 2794. His dam is from the Minola cow family from the Windy Hill breeding program. He ranks in the top 6% for marbling EPD.

18 SMOKY Y RED SKY 532C

2/01/15 1A-100% 3503085

RED NORTHLINE FAT TONY 605U PZC TMAS RED SKY 2794 WHITESTONE LANA V150	RED SVR GANGSTER 14S RED NORTHLINE RUBY 0305N PERKS ADVANCER 9088 WSRA LANA P070	Data BW 83 WW 638 YW 1194 %IMF 3.70 REA 13.11 FAT 0.32												
RED BRYLOR NEW TREND 22 RED CRIPPS HEATHER 917W RED DEVOLANE HEATHER 9F	SSS BLACK TREND 13B MEADOW CK MS SEAMAN 31A LEACHMAN HEAVENLY 8141 RED DEVOLANE MISS DESIGN 90D													
CED	BW	WW	YW	MILK	ME	HPG	CEM	STAY	MARB	YG	CW	REA	FAT	
3	-1.2	46	67	23	-4	9	3	12	0.29	-0.06	8	0.01	-0.02	

Smoky Y Red Sky 532C is the half brother to lots 1 through 20. He descends from the Heather cow family which is rich in Canadian performance blood.

19 SMOKY Y RED SKY 526C

2/09/15 1A-100% 3503089

RED NORTHLINE FAT TONY 605U PZC TMAS RED SKY 2794 WHITESTONE LANA V150	RED SVR GANGSTER 14S RED NORTHLINE RUBY 0305N PERKS ADVANCER 9088 WSRA LANA P070	Data BW 90 WW 630 YW 1200 %IMF 2.25 REA 13.44 FAT 0.40												
RED NORTHLINE ROBSON 116P RED CRIPPS MAXINE 714T RED SSS MAXINE 556F	RED NORTHLINE ROB ROY 122K RED ARSF ROSETTE 16F RED SSS RAMBO 866B SSS MAV'S MAXINE 452Y													
CED	BW	WW	YW	MILK	ME	HPG	CEM	STAY	MARB	YG	CW	REA	FAT	
2	-0.4	49	71	19	-8	7	5	10	-0.02	0.00	12	0.01	.00	

Smoky Y Red Sky 526C is one of the higher performing bulls sired by PZC TMAS Red Sky 2794. His dam is one of the members of the early groups of females that helped found the cow herd at Smoky Y Ranch.

20 SMOKY Y RED SKY 548C

2/04/15 1A-100% 3503068

RED NORTHLINE FAT TONY 605U PZC TMAS RED SKY 2794 WHITESTONE LANA V150	RED SVR GANGSTER 14S RED NORTHLINE RUBY 0305N PERKS ADVANCER 9088 WSRA LANA P070	Data BW 77 WW 633 YW 1257 %IMF 2.86 REA 13.16 FAT 0.32												
RED HOWE ACES WILD 22U RED WINDY HILL HEATHER 1271Z RED CRIPPS HEATHER 706T	RED BAR-E-L RIBEYE 103R RED HOWE LASS 45M RED NORTHLINE ROB ROY 122K RED CRIPPS HEATHER 235M													
CED	BW	WW	YW	MILK	ME	HPG	CEM	STAY	MARB	YG	CW	REA	FAT	
3	-1.1	49	73	25	-6	7	5	12	0.07	-0.06	12	0.00	-0.03	

Smoky Y Red Sky 548C is one of the half brothers that sell as lots 1 through 20. He is in the top 9% of the breed for milk. This is a calving ease bull with a 77 pound birth weight and a -1.1 BW EPD.

SMOKY Y RANCH RED ANGUS



LOT 21



RED LAZY MC TROOPER 21Y
SIRE OF LOT 21

21 WCR TROOPER 5000C

1/03/15 1A-100% 1743147

RED SSS SOLDIER 365W	RED SVR KNIGHT 236T	<table border="1"><tr><td>Data</td></tr><tr><td>BW</td></tr><tr><td>83</td></tr><tr><td>WW</td></tr><tr><td>635</td></tr><tr><td>YW</td></tr><tr><td>1340</td></tr><tr><td>%IMF</td></tr><tr><td>2.57</td></tr><tr><td>REA</td></tr><tr><td>14.55</td></tr><tr><td>FAT</td></tr><tr><td>0.60</td></tr></table>	Data	BW	83	WW	635	YW	1340	%IMF	2.57	REA	14.55	FAT	0.60
Data															
BW															
83															
WW															
635															
YW															
1340															
%IMF															
2.57															
REA															
14.55															
FAT															
0.60															
RED LAZY MC TROOPER 21Y	RED SSS BELLE 342S														
LAZY MC EXPRESS 60W	RED RMJ REDMAN 1T														

RED RMJ REDMAN 1T	5L NORSEMAN KING 2291
RED LAZY MC DIONA 52W	CROWFOOT KURUBA 4033P
RED LAZY MC DIONA 97N	LAZY MC WORLDWIDE 5K
	TG DIONA 6B

CED	BW	WW	YW	MILK	ME	HPG	CEM	STAY	MARB	YG	CW	REA	FAT
6	-1.1	48	88	26	-12	8	2	10	0.14	0.00	22	0.36	.03

Selling full possession and 2/3 semen interest.

WCR Trooper 5000C is one of the most important breeding bulls of the Red Angus breed to sell this year on the North American continent. He has become one of the sensational talking points among Red Angus breeders anywhere, and he combines all of the breed's most economically important traits. Years of selective breeding ingenuity are deeply entwined within the genetic profile of this magnificent breeding bull.

His sire, Red Lazy MC Trooper 21Y, the 2014 Nat. Champion Bull, is now one of the proven breeding bulls in the industry. His progeny are among the most highly sought, and time and time again his sons and daughters result in even more bonus to the genetic superiority of his offspring.

His dam, bred in the famed Lazy MC Angus program, made famous in the A-1 Land & Cattle herd, perfected in the Wildcat Creek herd, has now hit the most celebrated level yet with the production of this extraordinary breeding bull. She, in turn, is sired by Red RMJ Redman 1T, the highly respected sire that has produced some of the breed's most picture-perfect females. She is the most accomplished member of the Diona cow family.

Phenotype and genotype are perfectly harmonized with this fantastic breeding bull. He ranks in the top 1% for milk. His individual performance and ultrasound data make him absolutely complete as a far reaching breeding bull.

SMOKY Y RANCH RED ANGUS



RED SSS SOLDIER 365W
SIRE OF LOT 23



WCR MOJO 3012A
SIRE OF LOT 22

22 WCR MOJO 5048C

2/26/15 2-100% 1742592

RED SOO LINE POWER EYE 161X	RED COCKBURN RIBEYE 308U	Data
WCR MOJO 3012A	RED TR LYNN 301R	BW
RED BRYLOR CARMEN 64X	RED SSS ARSON 85U	88
	RED LAMBS CARMEN 26T	WW
		819
PEAK DOT IRON MOUNTAIN 933X	SAV IRON MOUNTAIN 8066	YW
WCR MISS GOLDIE MM 3175A	LADY OF PEAK DOT 818S	1378
BIEBER GOLDIE 9620	BUF CRK ROMEO L081	%IMF
	BIEBER GOLDIE 7193	3.94
		REA
		12.72

CED	BW	WW	YW	MILK	ME	HPG	CEM	STAY	MARB	YG	CW	REA	FAT
2	2.4	73	116	13	-5	6	2	9	0.49	0.12	43	-0.22	-0.03

Black/Red Carrier. WCR Mojo 5048C is richly and intensely bred from the most noted sire and dam lines known in the Angus business. This bull ranks in the top 4% for WW, top 2% for YW, top 5% for ME, top 2% for CW and top 9% for FAT. His individual performance is impressive and his ultrasound measurements are among the most impressive in the offering.

His sire, WCR Mojo 3012A, is one of the top sons of Red Soo Line Power Eye 161X, and he is from one of the top producing females in the Wildcat Program.

His dam, WCR Miss Goldie MM 3175A, is a black/red carrier female sired by Peak Dot Iron Mountain 933X. She is from Bieber Goldie 9620, one of the most noted donor females in the industry, and she is in the Overmiller Red Angus breeding program.

23 WCR SOLDIER 5026C

2/19/15 1A-100% 1742606

RED SVR KNIGHT 236T	RED SVR KNIGHT 73P	Data
RED SSS SOLDIER 365W	RED SOUTH VIEW MISS MAXI 45H	BW
RED SSS BELLE 342S	RED CROWFOOT OLE'S OSCAR	65
	RED SSS BELLE 612P	WW
		703
RED TOWAW INDEED 104H	RED CC EXPANSION 5E	YW
RED SPITTALBURN BAYBERRY 1X	RED TOWAW MOLLY 67C	1239
RED SPITTALBURN BAYBERRY 704	RED SIX MILE FULL HOUSE 572R	%IMF
	RED SPITTALBURN BAYBERRY 518	3.54
		REA
		15.30

CED	BW	WW	YW	MILK	ME	HPG	CEM	STAY	MARB	YG	CW	REA	FAT
4	-1.6	53	75	22	-13	9	3	13	0.43	-0.12	12	0.15	-0.03

Selling full possession and 2/3 semen interest. WCR Soldier 5026C is a deep red breeding bull that descends from some of the greatest of all Western Canadian high performing blood. He is in the top 1% for ME and top 9% for YG. He is one of the higher performing bulls in the offering and his scan data indicates substantial well rounded breeding efficiency.

Red SSS Soldier 365W has proven to be one of the great breeding sires of all time. His influence has greatly enhanced the profile of the entire breed, and his progeny continue to pace the breed for breeding enhancement.

Red Spittalburn Bayberry 1X, the daughter of Red Towaw Indeed 104H, was one of the foundation females at Wildcat Creek Ranch. Her influence was well-documented within the breeding herd of the great establishment. This son by SSS Soldier 365W is her greatest achievement at this point.

SMOKY Y RANCH RED ANGUS



RED RAINBOW LOIS 7U
DAM OF LOT 24

24 WCR DETOUR 5050C

2/26/15 1A-100% 1742633

RED RMJ REDMAN 1T	5L NORSEMAN KING 2291
RED LAZY MC CC DETOUR 2W	CROWFOOT KURUBA 4033P
RED LAZY MC BESS 12S	RED LAZY MC SMASH 41N
	RED LAZY MC BESS 73N
RED SSS PURSUE 858P	RED SSS PURSUE 99M
RED RAINBOW LOIS 7U	RED SSS QUEEN 764L
RED GEIS LOIS 166'05	RED KBJ KNIGHT 17J
	RED GEIS LOIS 157'01

Data
BW
74
WW
665
YW
1263
%IMF
3.01
REA
13.72
FAT
0.47

GED	BW	WW	YW	MILK	ME	HPG	CEM	STAY	MARB	YG	CW	REA	FAT
6	-2.0	43	70	19	-11	7	0	9	0.10	-0.11	10	0.24	-0.01

Selling full possession and 2/3 semen interest. WCR Detour 5050C is a combination of the breed's best and most proven. This pedigree and ancestral derivation are no stranger to anyone in the industry, and exceptional accomplishments have been achieved by this well-known family line. Decades of immense accolades are a part of the heritage of this family, and stability of pedigree is a hallmark of this family legacy. The descendents from this family lineage have been tremendously accomplished from this breeding endeavor. WCR Detour 5050C has emerged as a great breeding sire for the future based upon his pedigree, performance and ultrasound measurements.

Red Lazy MC Detour 2W has become one of the greatest of all breeding sires. Years and years of family documentation has made this breeding bull one of the foundations sires recognized across breed lines as one of the most pre-potent sires within the industry.

Red Rainbow Lois 7U has proven herself to be one of the face card donors in the breed. The former sale topper and proven producer of the most competitive and breed-leading genetics is now a part of the Smoky Y breeding herd.

SMOKY Y RANCH RED ANGUS



25 WCR DETOUR 5032C

2/21/15 1A-100% 1742630

RED RMJ REDMAN 1T 5L NORSEMAN KING 2291
RED LAZY MC CC DETOUR 2W CROWFOOT KURUBA 4033P
 RED LAZY MC BESS 12S RED LAZY MC SMASH 41N
 RED LAZY MC BESS 73N

RED COCKBURN RIBEYE 308U RED BAR-E-L RIBEYE 103R
WCAT REBECCA 084Y RED WILBAR CORA 443P
 RED SOO LINE REBECCA 261P RED CRESCENT CREEK FRCHIEF 7
 RED EAGLE ACRES REBECCA 78C

CED	BW	WW	YW	MILK	ME	HPG	CEM	STAY	MARB	YG	CW	REA	FAT	Data
5	-0.8	49	69	19	-11	8	-1	8	-0.01	-0.03	10	0.09	.00	BW 80 WW 711 YW 1208 %IMF 3.02 REA 13.04 FAT 0.53

Selling full possession and 2/3 semen interest. WCR Detour 5032C is a top bull from the top of the sale offering. Sired by Red Lazy MC CC Detour 2W, this herd bull has developed into a top prospect. He is a combination of the best available in the industry.

WCAT Rebecca 084Y adds to the pedigree depth by being a direct daughter of Red Cockburn Ribeye 308U from the Red Soo Line Rebecca 261P cow line. This genetic combination has proven to be one of the most successful in the entire industry.

26 SMOKY Y NEBULA 580C

2/06/15 1A-100% 3503061

BECKTON NEPTUNE R2 K065 BECKTON NEPTUNE RR B284
BECKTON NEBULA M045 BECKTON LANA C735 TP
 BECKTON BELGA K285 JL BECKTON JULIAN GG B571
 BECKTON BELGA G493 HR

LCC MAJOR LEAGUE A502M BFCK CHEROKEE CNYN 4912
CAMP 1A MISS ML CRYSTAL S110 KRN REBA'S ROBIN
 LSF CRYSTAL J1350 LCC HEAVEN OR BUST1000B
 PARK CRYSTAL C09

CED	BW	WW	YW	MILK	ME	HPG	CEM	STAY	MARB	YG	CW	REA	FAT	Data
10	-5.6	48	74	18	-2	14	3	13	0.42	0.25	6	-0.39	.06	BW 73 WW 611 YW 1209 %IMF 3.21 REA 12.19 FAT 0.49

Smoky Y Nebula 580C is the only bull in the offering with this pedigree. He represents some of the most proven blood in the industry, and he is a multiple trait-leading bull. He can work perfectly in many breeding herds, and he is an ideal heifer bull that has ample performance and carcass merit.

His sire, Beckton Nebula M045, is one of the foundation sires within the Red Angus breed for fault-free breeding stock. He has been one of the proven sires that has assisted in shaping and structuring the under-penning of the genetic fabric of the Red Angus breed.

His dam, CAMP 1A MISS ML CRYSTAL S110 is a direct daughter of LCC Major League A502M. From her, the most rock-solid genetics are available to the consistency of pedigree through this breeding bull sired by Beckton Nebula M045. Ranks in the top 18% for Herd-builder, top 3% for BW, and top 3% for HPG.

SMOKY Y RANCH RED ANGUS



PZC TMAS RED ZONE 2795 SIRE OF LOTS 27-34

27 SMOKY Y RED ZONE 568C

3/16/15 1A-100% 3503055

RED NORTHLINE FAT TONY 605U PZC TMAS RED ZONE 2795 WHITESTONE LANA V150	RED SVR GANGSTER 14S RED NORTHLINE RUBY 0305N PERKS ADVANCER 9088 WSRA LANA P070	Data BW 78 WW 630 YW 1217 %IMF 3.52 REA 12.01 FAT 0.33
MESSMER PACKER S008 CAMP 1A LANA Y152 CAMP 1A MISS LANA S207	MESSMER JOSHUA 019P MESSMER MILLIE 124P CAMP 1A MR LANCER GC 482P LCHMN LAN H1772	
CED BW WW YW MILK ME HPG CEM STAY MARB YG CW REA FAT		
4 -1.5 53 83 20 3 9 4 10 0.32 -0.01 17 0.13 -0.00		

Smoky Y Red Zone 568C is one of eight bulls that sell in this sale offering. The sons sired by this great son of Red Northline Fat Tony 605U are a consistent and uniform group of yearling bulls. Historically, his sons have been among the most highly sought through past Smoky Y bull sales.

This bull and his three-quarter brother that sells as lot 28, are from daughters of Messmer Packer S008. These bulls are real herd bulls and ready for some heavy service at sale time.

28 SMOKY Y RED ZONE 552C

3/14/15 1A-100% 3503038

RED NORTHLINE FAT TONY 605U PZC TMAS RED ZONE 2795 WHITESTONE LANA V150	RED SVR GANGSTER 14S RED NORTHLINE RUBY 0305N PERKS ADVANCER 9088 WSRA LANA P070	Data BW 85 WW 732 YW 1357 %IMF 4.85 REA 14.77 FAT 0.57
MESSMER PACKER S008 CAMP 1A P CHER CRYSTAL Y153 CAMP 1A CHER CRYSTAL 425P	MESSMER JOSHUA 019P MESSMER MILLIE 124P BFCK CHEROKEE CNYN 4912 LSF CRYSTAL J1350	
CED BW WW YW MILK ME HPG CEM STAY MARB YG CW REA FAT		
4 -0.9 67 100 18 2 9 1 11 0.64 0.14 28 0.39 .08		

Smoky Y Red Zone 552C is a three-quarter brother to lot 27. Both are sons of PZC TMAS Red Zone 2975 from half sisters by Messmer Packer S008. This bull has strong EPDs for carcass traits. He is in the top 14% for marbling and top 11% for REA.

SMOKY Y RANCH RED ANGUS



29 SMOKY Y RED ZONE 569C

2/10/15 1A-100% 3503035

RED NORTHLINE FAT TONY 605U		RED SVR GANGSTER 14S		Data										
PZC TMAS RED ZONE 2795		RED NORTHLINE RUBY 0305N												
WHITESTONE LANA V150		PERKS ADVANCER 9088												
		WSRA LANA P070		BW										
BECKTON LANCER F442 T		BECKTON LANCER T A664		83										
CAMP1A MISS LANCER GC 484P		BKT SUFFEINA A828 DM		WW										
LCC OLIVE LA976		LCHMN GRANDCANYON 1244G		706										
		LMAN OLIVE 9400		YW										
				1435										
CED	BW	WW	YW	MILK	ME	HPG	CEM	STAY	MARB	YG	CW	REA	FAT	%IMF
3	0.0	63	101	18	1	7	4	11	0.65	0.10	30	0.35	.05	5.02
														REA
														14.46
														FAT
														0.49

Smoky Y Red Zone 569C has been the favorite of many visitors. The impressive yearling bull has good statistics and data to match his excellent profile and correctness. He is a big footed and rugged bull that will sire high performing calves with added depth and dimension.

His dam is one of the most consistent producers in the herd.

30 SMOKY Y RED ZONE 545C

3/05/15 1A-100% 3503062

RED NORTHLINE FAT TONY 605U		RED SVR GANGSTER 14S		Data										
PZC TMAS RED ZONE 2795		RED NORTHLINE RUBY 0305N												
WHITESTONE LANA V150		PERKS ADVANCER 9088												
		WSRA LANA P070		BW										
JRA FREEDOM 3323		LCHMAN LITTLE JOHN 1509D		85										
JRA JAMES 4209		JRA MS PRIS		WW										
JRA JAMES 2446		LMB ELWAY 938		660										
		RC JAMES 721		YW										
				1205										
CED	BW	WW	YW	MILK	ME	HPG	CEM	STAY	MARB	YG	CW	REA	FAT	%IMF
1	-0.4	48	72	19	2	8	4	10	0.49	-0.01	12	0.09	.00	4.36
														REA
														12.93
														FAT
														0.36

Smoky Y Red Zone 545C is an early March-born bull sired by PZC TMAS Red Zone 2795. His dam is a James-bred female sired by JRA Freedom 3323.

SMOKY Y RANCH RED ANGUS

31 SMOKY Y RED ZONE 543C

4/02/15 1A-100% 3503057

RED NORTHLINE FAT TONY 605U RED SVR GANGSTER 14S
PZC TMAS RED ZONE 2795 RED NORTHLINE RUBY 0305N
 WHITESTONE LANA V150 PERKS ADVANCER 9088
 WSRA LANA P070

RED CROWFOOT BIG DADDY 2058M MLK CRK CUB 722
CROWFOOT BLACKBIRD 4849P RED CROWFOOT BLACKBIRD 9173J
 CH TRAVELER 9614 HOMESTRETCH TRAVELER 711
 CH BLACKBIRD C6912

CED	BW	WW	YW	MILK	ME	HPG	CEM	STAY	MARB	YG	CW	REA	FAT
2	0.0	34	49	20	-8	7	1	9	0.26	0.01	0	-0.18	.00

Data
BW
85
WW
560
YW
1005
%IMF
3.62
REA
11.88
FAT
0.36

Smoky Y Red Zone 543C is one of the top bulls from a strong Western Canadian-bred dam.

33 SMOKY Y RED ZONE 581C

3/28/15 3-50% 3503034

RED NORTHLINE FAT TONY 605U RED SVR GANGSTER 14S
PZC TMAS RED ZONE 2795 RED NORTHLINE RUBY 0305N
 WHITESTONE LANA V150 PERKS ADVANCER 9088
 WSRA LANA P070

Non registered dam

CED	BW	WW	YW	MILK	ME	HPG	CEM	STAY	MARB	YG	CW	REA	FAT

Data
BW
89
WW
480
YW
894
%IMF
4.12
REA
11.70
FAT
0.32

Category 3 son of PZC TMAS RED ZONE 2795. His dam is a non-registered Red Angus female.

32 SMOKY Y RED ZONE 522C

3/31/15 1A-100% 3503049

RED NORTHLINE FAT TONY 605U RED SVR GANGSTER 14S
PZC TMAS RED ZONE 2795 RED NORTHLINE RUBY 0305N
 WHITESTONE LANA V150 PERKS ADVANCER 9088
 WSRA LANA P070

FEDDES OSCAR X28 RED CROWFOOT OLE'S OSCAR
CAMP 1A CHER LAN 0S208Z FEDDES SLEEK 806
 CAMP 1A CHER LAN X050 BFCK CHEROKEE CNYN 4912
 LCHMN LAN H1772

CED	BW	WW	YW	MILK	ME	HPG	CEM	STAY	MARB	YG	CW	REA	FAT
7	-2.8	57	87	22	1	9	4	12	0.59	0.02	17	0.17	.02

Data
BW
69
WW
688
YW
1244
%IMF
4.62
REA
13.35
FAT
0.38

Smoky Y Red Zone 522C is the son of PZC TMAS RED ZONE 2795, and his dam is a daughter of the popular Feddes Oscar X28. The sons of Feddes Oscar X28 have been in great demand in the past Smoky Y Bull Sales and in sale offerings around the country. This yearling bull has added genetic potential based upon the strong cow family on the bottom side of the pedigree.

34 SMOKY Y RED ZONE 518C

3/07/15 3-50% 3503028

RED NORTHLINE FAT TONY 605U RED SVR GANGSTER 14S
PZC TMAS RED ZONE 2795 RED NORTHLINE RUBY 0305N
 WHITESTONE LANA V150 PERKS ADVANCER 9088
 WSRA LANA P070

Non registered dam

CED	BW	WW	YW	MILK	ME	HPG	CEM	STAY	MARB	YG	CW	REA	FAT

Data
BW
83
WW
642
YW
1190
%IMF
3.18
REA
14.66
FAT
0.46

Smoky Y Red Zone 518C is a category 3 son of PZC TMAS RED ZONE 2795. His dam is a non-registered Red Angus female.



FEDDES OSCAR X28
 Maternal Grand sire of Lot 32



SMOKY Y RANCH RED ANGUS



RED SSS TRAVERSE 387Z SIRE OF LOTS 35-50

35 SMOKY Y TRAVERSE 561C

1/26/15 1A-100% 3503087

RED SSS TRAPPER 683X RED FLYING K AMBUSH 121U
RED SSS TRAVERSE 387Z RED SSS KURUBA 344S
 RED SSS EISA 122R RED CROWFOOT OLE'S OSCAR
 RED SSS EISA 448N

RED BAR-E-L NAPOLEON 4N RED YY RED KNIGHT 640F
RED WINDY HILL MISS 842U RED BAR-E-L CARMELL 5H
 RED DKF MISS STAR 127E RED SYMBRAE STARBUCK 137B
 RED DKF MISS DALLES 59C

CED	BW	WW	YW	MILK	ME	HPG	CEM	STAY	MARB	YG	CW	REA	FAT
0	1.4	64	93	5	-13	8	6	13	0.49	-0.05	27	0.00	-0.05

Data
BW
94
WW
649
YW
1241
%IMF
4.26
REA
13.02
FAT
0.33

Smoky Y Traverse 561C is a son of Red SSS Traverse 387Z. Some of the most powerful performance in the sale offering and the Smoky Y herd, is due to the overwhelming influence of the great breeding bull by Red SSS Trapper 683X. This bull has some stout statistics for weaning and yearling weights, and his scan data indicates some of the good data for both IMF and REA. His dam is one of the good producing females originating in the Windy Hill program before making her way to the Smoky Y herd.

Bulls such as this one were among the top sellers in last year's Smoky Y Bull Sale. Some of the most tried and true blood in the breed is included in the pedigree of this good son of Red SSS Travers 387Z.

36 SMOKY Y TRAVERSE 529C

3/08/15 1A-100% 3503096

RED SSS TRAPPER 683X RED FLYING K AMBUSH 121U
RED SSS TRAVERSE 387Z RED SSS KURUBA 344S
 RED SSS EISA 122R RED CROWFOOT OLE'S OSCAR
 RED SSS EISA 448N

RED BAR-E-L NAPOLEON 4N RED YY RED KNIGHT 640F
WINDY HILL MS NAPOLEON633S RED BAR-E-L CARMELL 5H
 RED RUTHE MINOLA 133A RED STILTS OF TAG-A-LONG 5L
 RED RUTHE MINOLA 16W

CED	BW	WW	YW	MILK	ME	HPG	CEM	STAY	MARB	YG	CW	REA	FAT
-1	2.3	57	78	6	-13	8	5	13	0.21	-0.14	19	-0.03	-0.07

Data
BW
95
WW
601
YW
1161
%IMF
2.79
REA
12.98
FAT
0.23

Smoky Y Traverse 529C is the excellent March-born son of Red SSS Traverse 387Z. He is one of sixteen half brothers and one of seven tree-quarter brothers that sell in this offering as lots 35 through 50. Some of the most powerfully constructed Red Angus bulls in North America are among this group of sons of Red SSS Traverse 387Z. There is a significant layering of performance genetics made available through this and the other of the sons of the great breeding bull.

Strong performance and carcass merit may be added to calf crops through the service of this bull that sells as lot 36.

SMOKY Y RANCH RED ANGUS



37 SMOKY Y TRAVERSE 507C

3/04/15 1A-100% 3503100

RED SSS TRAPPER 683X	RED FLYING K AMBUSH 121U	Data BW 88
RED SSS TRAVERSE 387Z	RED SSS KURUBA 344S	
RED SSS EISA 122R	RED CROWFOOT OLE'S OSCAR	WW 655
	RED SSS EISA 448N	YW 1285
RED BAR-E-L NAPOLEON 4N	RED YY RED KNIGHT 640F	%IMF 3.60
WINDY HILL MS NAPOLEON602S	RED BAR-E-L CARMELL 5H	REA 12.31
RED BAR-B MISS INSTINCT 1H	PAL BASIC INSTINCT 1B	FAT 0.34
	RED LEN-BAR MISS GAETA 73D	

CED	BW	WW	YW	MILK	ME	HPG	CEM	STAY	MARB	YG	CW	REA	FAT
2	0.8	68	102	4	-13	8	6	14	0.37	-0.01	31	-0.13	-0.05

Selling full possession and 2/3 semen interest. Smoky Y Traverse 507C is one of the most eye-appealing bulls in the offering. He shares his heritage with sixteen other half brothers in the offering, and the sons of Red SSS Traverse 387C are impressive, muscular and free-wheeling in their movement. Their sire, although deceased, has left an excellent set of breeding bulls available through this sale offering, and several of this top daughters in the replacement group in the Smoky Y breeding herd.

Among the most forward-leaning genetic individuals in the industry, the half and three-quarter brothers that sell as lots 35 through 50 are serious breeding bulls for the industry.

38 SMOKY Y TRAVERSE 550C

2/20/15 1A-100% 3503092

RED SSS TRAPPER 683X	RED FLYING K AMBUSH 121U	Data BW 89
RED SSS TRAVERSE 387Z	RED SSS KURUBA 344S	
RED SSS EISA 122R	RED CROWFOOT OLE'S OSCAR	WW 644
	RED SSS EISA 448N	YW 1225
RED BAR-E-L NAPOLEON 4N	RED YY RED KNIGHT 640F	%IMF 4.56
WINDY HILL BLACKBIRD 738T	RED BAR-E-L CARMELL 5H	REA 12.22
RED WINDY HILL MS 30X 153N	RED LAZY MC THIRTY X 22L	FAT 0.34
	RED HOWE MS BLACKBIRD DDH 15	

CED	BW	WW	YW	MILK	ME	HPG	CEM	STAY	MARB	YG	CW	REA	FAT
2	0.1	58	78	10	-13	8	7	14	0.53	-0.06	16	-0.08	-0.04

Smoky Y Traverse 550C is one of the sons of Red SSS Traverse 387Z that highlight the sale offering. This bull has a strong marbling score that is coupled with some of the strong performance available. The genetic blend that is offered with this bull has the potential of adding even more pounds and efficiency to a breeding endeavor. Years and years of breeding and perfections is available through the service of this bull or his sixteen half brothers.

Some of the most proven blood is made available through this yearling bull.

SMOKY Y RANCH RED ANGUS



39 SMOKY Y TRAVERSE 525C

2/15/15 1A-100% 3503104

RED SSS TRAPPER 683X	RED FLYING K AMBUSH 121U	Data											
RED SSS TRAVERSE 387Z	RED SSS KURUBA 344S	BW 86											
RED SSS EISA 122R	RED CROWFOOT OLE'S OSCAR	WW 665											
	RED SSS EISA 448N	YW 1234											
RED BAR-E-L NAPOLEON 4N	RED YY RED KNIGHT 640F	%IMF 3.48											
WINDY HILL M NAPOLEON 541R	RED BAR-E-L CARMELL 5H	REA 13.24											
RED BAR-B MISS INSTINCT 1H	PAL BASIC INSTINCT 1B	FAT 0.41											
	RED LEN-BAR MISS GAETA 73D												
CED	BW	WW	YW	MILK	ME	HPG	CEM	STAY	MARB	YG	CW	REA	FAT
2	0.6	65	97	2	-13	8	6	13	0.35	0.01	28	-0.00	-0.03

Selling full possession and 2/3 semen interest. Smoky Y Traverse 525C is one of the consistent nicely constructed sons of Red SSS Traverse 387Z. He is a combination of high performance and solid carcass measurements, and he pulls all things together in a great package. These sons of the great breeding bull are a rare commodity, because of the death of Red SSS Traverse 387, his influence will no longer be available. His progeny were among some of the most powerful bulls in last year's sale, and there are even more sons to choose from this year.

This bull is a real pasture stomper, and he is an excellent young breeding bull.

40 SMOKY Y TRAVERSE 546C

3/02/15 1A-100% 3503097

RED SSS TRAPPER 683X	RED FLYING K AMBUSH 121U	Data											
RED SSS TRAVERSE 387Z	RED SSS KURUBA 344S	BW 73											
RED SSS EISA 122R	RED CROWFOOT OLE'S OSCAR	WW 625											
	RED SSS EISA 448N	YW 1077											
RED BAR-E-L NAPOLEON 4N	RED YY RED KNIGHT 640F	%IMF 5.07											
WINDY HILL MS NAPOLEON616S	RED BAR-E-L CARMELL 5H	REA 12.08											
RED EGGEN 16J MISS 57M	RED EGGEN POUND MAKER 16J	FAT 0.37											
	RED BAR-B FRIDA 7H												
CED	BW	WW	YW	MILK	ME	HPG	CEM	STAY	MARB	YG	CW	REA	FAT
0	1.5	66	94	6	-13	8	6	14	0.44	-0.07	28	0.09	-0.05

Smoky Y Traverse 546C is the son of Red SSS Traverse 287Z with a light birth weight of 73 pounds, and he is a good choice for use on heifers. The moderately framed yearling bull is from some of the most recognizable names in the industry. Solid statistics can be noted across the board. TW.

41 SMOKY Y TRAVERSE 567C

3/02/15 1A-100% 3503098

RED SSS TRAPPER 683X	RED FLYING K AMBUSH 121U	Data											
RED SSS TRAVERSE 387Z	RED SSS KURUBA 344S	BW 74											
RED SSS EISA 122R	RED CROWFOOT OLE'S OSCAR	WW 578											
	RED SSS EISA 448N	YW 1139											
RED BAR-E-L NAPOLEON 4N	RED YY RED KNIGHT 640F	%IMF 6.05											
WINDY HILL MS NAPOLEON616S	RED BAR-E-L CARMELL 5H	REA 12.88											
RED EGGEN 16J MISS 57M	RED EGGEN POUND MAKER 16J	FAT 0.38											
	RED BAR-B FRIDA 7H												
CED	BW	WW	YW	MILK	ME	HPG	CEM	STAY	MARB	YG	CW	REA	FAT
0	1.5	66	94	6	-13	8	6	14	0.44	-0.07	28	0.09	-0.05

Smoky Y Traverse 567C is a bull with a lighter birth weight for use on heifers. A 74 pound birth weight makes him one of the combination bulls that can work in several different ways. This is one of sixteen half brothers that sell sired by Red SSS Traverse 387Z. TW.

SMOKY Y RANCH RED ANGUS



LOT 42



LOT 43

42 SMOKY Y TRAVERSE 505C

1/10/15 1A-100% 3503090

RED SSS TRAPPER 683X	RED FLYING K AMBUSH 121U	Data
RED SSS TRAVERSE 387Z	RED SSS KURUBA 344S	
RED SSS EISA 122R	RED CROWFOOT OLE'S OSCAR	WW 692
	RED SSS EISA 448N	YW 1346
RED NORTHLINE ROB ROY 122K	RED WILD ROSE ROBINHOOD 11F	%IMF 4.03
RED CRIPPS HEATHER 706T	RED BAR EL SYBIL 122E	REA 12.26
RED CRIPPS HEATHER 235M	RED SSS BEDROCK 68H	FAT 0.46
	RED DEVOLANE HEATHER 9F	

CED	BW	WW	YW	MILK	ME	HPG	CEM	STAY	MARB	YG	CW	REA	FAT
2	-0.2	64	94	21	-9	8	7	13	0.41	0.09	25	-0.14	-0.01

Selling full possession and 2/3 semen interest. Smoky Y Traverse 505C is a powerfully constructed son of Red SSS Traverse 387Z, and he fully demonstrates the genetic excellence that has created the great cow herd assembled by Smoky Y. True seedstock genetics are offered from this great herd, and this bull that sells as lot 42 is an extraordinary individual from a noteworthy cow family line. Combination genetics are fully available to supply breed strength for an even stronger level of acceptance.

43 SMOKY Y TRAVERSE 516C

2/06/15 1A-100% 3503105

RED SSS TRAPPER 683X	RED FLYING K AMBUSH 121U	Data
RED SSS TRAVERSE 387Z	RED SSS KURUBA 344S	
RED SSS EISA 122R	RED CROWFOOT OLE'S OSCAR	WW 655
	RED SSS EISA 448N	YW 1323
RED YY RED KNIGHT 640F	RED YY 23L TOPPER 408D	%IMF 3.65
WINDY HILL MS KNIGHT 508R	RED TOP GOLDIE 40U	REA 14.10
RED WINDY HILL MS 151N	RED HOWE C16 DDH 104D	FAT 0.38
	RED SIX MILE FLOWER 150H	

CED	BW	WW	YW	MILK	ME	HPG	CEM	STAY	MARB	YG	CW	REA	FAT
4	-1.5	63	93	10	-10	8	7	14	0.38	-0.06	23	0.11	-0.03

Smoky Y Traverse 516C is a lighter birth weight son of Red SSS Traverse 387Z. A 78 pound birth weight bull with a -1.5 birth weight EPD. He represents the quality available from the Smoky Y Ranch breeding program.

SMOKY Y RANCH RED ANGUS



LOT 44



LOT 45

44 SMOKY Y TRAVERSE 503C

1/29/15 1A-100% 3503066

RED SSS TRAPPER 683X
RED SSS TRAVERSE 387Z
 RED SSS EISA 122R

RED FLYING K AMBUSH 121U
 RED SSS KURUBA 344S
 RED CROWFOOT OLE'S OSCAR
 RED SSS EISA 448N

RED HOWE ACES WILD 22U
RED WINDY HILL HEATHER 1340A
 RED CRIPPS HEATHER 901W

RED BAR E-L RIBEYE 103R
 RED HOWE LASS 45M
 5L NORSEMAN KING 229I
 RED CRIPPS HEATHER 504R

CED	BW	WW	YW	MILK	ME	HPG	CEM	STAY	MARB	YG	CW	REA	FAT	Data
4	-0.9	54	76	12	-13	8	4	13	0.25	-0.17	14	0.13	-0.06	BW 66 WW 621 YW 1227 %IMF 3.37 REA 13.67 FAT 0.29

Smoky Y Traverse 503C is one of the top half brothers to sell in the offering. This is the third calf crop of the progeny of Red SSS Traverse 387Z, and the breeding bull has offered great performance to the Smoky Y breeding program. The female mates to these bulls are among the best replacement heifers at Smoky Y Ranch. Although he is now deceased, his influence will make a noted impact upon the quality of the great breeding herd.

45 SMOKY Y TRAVERSE 520C

1/22/15 1A-100% 3503067

RED SSS TRAPPER 683X
RED SSS TRAVERSE 387Z
 RED SSS EISA 122R

RED FLYING K AMBUSH 121U
 RED SSS KURUBA 344S
 RED CROWFOOT OLE'S OSCAR
 RED SSS EISA 448N

RED HOWE ACES WILD 22U
WINDY HILL BLACKBIRD 1317A
 WINDY HILL BLACKBIRD 1036X

RED BAR E-L RIBEYE 103R
 RED HOWE LASS 45M
 RED WINDY HILL STOCKMAN 706T
 WINDY HILL BLACKBIRD 738T

CED	BW	WW	YW	MILK	ME	HPG	CEM	STAY	MARB	YG	CW	REA	FAT	Data
2	0.1	66	99	10	-13	9	6	12	0.53	0.01	29	0.05	-0.02	BW 79 WW 655 YW 1331 %IMF 4.80 REA 13.65 FAT 0.40

Smoky Y Traverse 520C is a combination of a moderated birth weight with significant IMF data. The total package of this bull makes him one for of the top bulls for multiple trait selection and great performance. He, like all the sons of Traverse, are excellent Red Angus bulls that can be versatile in their usage. His dam is one of the top producing females in the Smoky Y breeding program.

SMOKY Y RANCH RED ANGUS

46 SMOKY Y TRAVERSE 514C

2/18/15 1A-100% 3503099

RED SSS TRAPPER 683X		RED FLYING K AMBUSH 121U		Data										
RED SSS TRAVERSE 387Z		RED SSS KURUBA 344S												
RED SSS EISA 122R		RED CROWFOOT OLE'S OSCAR												
		RED SSS EISA 448N		BW										
RED PEBBLERIDGE BLACK SUNRIS		WIWA CREEK STOCKMAN 14'99		88										
WINDY HILL MS STOCKMAN606S		CALLAMERE ROSEGAY 2E		WW										
RED LLB BLACKWOOD 242M		RED BAR-E-L TY 31K		598										
		RED DREAM MAKERS LADYBIRD 70		YW										
				1165										
				%IMF										
				2.50										
				REA										
				12.79										
CED	BW	WW	YW	MILK	ME	HPG	CEM	STAY	MARB	YG	CW	REA	FAT	
1	0.9	56	74	14	-13	8	6	10	0.11	-0.10	15	-0.03	-0.05	0.31

Top 1% ME and Top 4% Fat

47 SMOKY Y TRAVERSE 502C

1/29/15 1A-100% 3503094

RED SSS TRAPPER 683X		RED FLYING K AMBUSH 121U		Data										
RED SSS TRAVERSE 387Z		RED SSS KURUBA 344S												
RED SSS EISA 122R		RED CROWFOOT OLE'S OSCAR												
		RED SSS EISA 448N		BW										
RED SLC STORM 225P		RED YY STORM 901J		102										
RED CRIPPS HEATHER 630S		RED SLC PRALEE 188G		WW										
RED CRIPPS HEATHER 235M		RED SSS BEDROCK 68H		705										
		RED DEVOLANE HEATHER 9F		YW										
				1387										
				%IMF										
				3.41										
				REA										
				14.77										
CED	BW	WW	YW	MILK	ME	HPG	CEM	STAY	MARB	YG	CW	REA	FAT	
2	1.9	70	104	14	-12	7	7	14	0.27	-0.12	34	0.16	-0.07	0.25

Top 10% for WW, Top 18% for YW, Top 1% for ME, Top 9% for YG, Top 12% for CW, and Top 4% for Fat.

48 SMOKY Y TRAVERSE 558C

2/13/15 2-100% 3503082

RED SSS TRAPPER 683X		RED FLYING K AMBUSH 121U		Data										
RED SSS TRAVERSE 387Z		RED SSS KURUBA 344S												
RED SSS EISA 122R		RED CROWFOOT OLE'S OSCAR												
		RED SSS EISA 448N		BW										
WIWA CREEK RITO 43'06		BAR SS RITO 113K		77										
WINDY HILL BLACKBIRD 940W		WIWA CREEK EVERGREEN 23J 37'		WW										
WINDY HILL BLACKBIRD 738T		RED BAR-E-L NAPOLEON 4N		591										
		RED WINDY HILL MS 30X 153N		YW										
				1177										
				%IMF										
				4.95										
				REA										
				12.41										
CED	BW	WW	YW	MILK	ME	HPG	CEM	STAY	MARB	YG	CW	REA	FAT	
5	-1.9	45	63	13	-13	8	6	11	0.62	0.00	5	-0.07	.00	0.47

77 pound BW, 4.95% IMF, and Top 1% ME

49 SMOKY Y TRAVERSE 504C

2/24/15 1A-100% 3503102

RED SSS TRAPPER 683X		RED FLYING K AMBUSH 121U		Data										
RED SSS TRAVERSE 387Z		RED SSS KURUBA 344S												
RED SSS EISA 122R		RED CROWFOOT OLE'S OSCAR												
		RED SSS EISA 448N		BW										
RED SSS BEDROCK 68H		SSS BOOMER 803B		60										
RED CRIPPS HEATHER 504R		RED SSS MISS PEMA 154C		WW										
RED DEVOLANE HEATHER 9F		LEACHMAN HEAVENLY 8141		526										
		RED DEVOLANE MISS DESIGN 90D		YW										
				1152										
				%IMF										
				4.49										
				REA										
				12.78										
CED	BW	WW	YW	MILK	ME	HPG	CEM	STAY	MARB	YG	CW	REA	FAT	
3	-0.6	57	83	16	-12	7	6	13	0.34	-0.08	19	0.01	-0.04	0.46

60 pound BW, 4.49% IMF, and Top 1% IMF. TW.

50 SMOKY Y TRAVERSE 578C

2/27/15 1A-100% 3503101

RED SSS TRAPPER 683X		RED FLYING K AMBUSH 121U		Data										
RED SSS TRAVERSE 387Z		RED SSS KURUBA 344S												
RED SSS EISA 122R		RED CROWFOOT OLE'S OSCAR												
		RED SSS EISA 448N		BW										
RED YY RED KNIGHT 640F		RED YY 23L TOPPER 408D		72										
WINDY HILL MS KNIGHT 426P		RED TOP GOLDIE 40U		WW										
RED CUTARM MINRVA 255B		DEKAP RED DALLES 345		544										
		RED SIX MILE JULIE 120N		YW										
				1091										
				%IMF										
				2.83										
				REA										
				13.03										
CED	BW	WW	YW	MILK	ME	HPG	CEM	STAY	MARB	YG	CW	REA	FAT	
4	-1.1	47	67	7	-10	8	7	13	0.24	-0.14	8	0.00	-0.05	0.29

72 pound BW, Top 2% ME, Top 9% CEM, and Top 8% for YG



SMOKY Y RANCH RED ANGUS



RED WINDY HILL ZEPPELIN 1240 SIRE OF LOTS 51-56

51 SMOKY Y ZEPPELIN 523C

2/06/15 1A-100% 3503091

RED MRLA 61X	RED MRLA ECONOMY 810	Data
RED WINDY HILL ZEPPELIN 1240	RED MRLA MISS 580U	
RED WINDY HILL M NALPOEON 50	RED BAR-E-L NAPOLEON 4N	WW 572
	RED EGGEN GRAVITY 28JMISS 11	YW 1294
RED WILDMAN RIO GRANDE 520R	RED WILDMAN EL GRANDE 5M	%IMF 3.79
DIAMOND T RIO'S MAY 224 07	RED BLUE SPRUCE LARKABA 27F	REA 13.39
RED DIAMOND MAY 14'00	RED DIAMOND T NONE BETTER 5H	FAT 0.46
	RED BAR-V MAY 14X	

Smoky Y Zeppelin 523C is one of the top sons of Red Windy Hill Zeppelin 1240. The popular breeding bull is a part of the Rainbow Red program, and over the past couple of years, his progeny have become more and more of interest and demand by breeders across North America. His sons, in turn, were among the top-sellers last year's Smoky Y Bull Sale. This powerful bull that sells as lot 51 has a great dam, and she is one of the top milking cows in the herd.

52 SMOKY Y ZEPPELIN 573C

3/19/15 1A-100% 3503080

RED MRLA 61X	RED MRLA ECONOMY 810	Data
RED WINDY HILL ZEPPELIN 1240	RED MRLA MISS 580U	
RED WINDY HILL M NALPOEON 50	RED BAR-E-L NAPOLEON 4N	WW 565
	RED EGGEN GRAVITY 28JMISS 11	YW 1072
RED GEIS PRIME RIB 411	PREMIER PATRIOT 16	%IMF 4.66
RED SY YVETTE 78Y	RED GEIS KURUBA 5'92	REA 11.45
RED WYNNBROOK'S TANYA 73T	BJR MAKE MY DAY 981	FAT 0.25
	RED PR BAR STAR 63N	

Smoky Y Zeppelin 573C is a solid breeding bull for both phenotype and genotype. He has a great look and his individual performance and ultrasound data is in line. He has a 4.66 IMF scan. Red Angus bulls of this caliber are available through this sale offering of Smoky Y Ranch.

Top 3% for ME, Top 16% for YG, and Top 4% for Fat

SMOKY Y RANCH RED ANGUS



53 SMOKY Y ZEPPELIN 571C

3/02/15 1A-100% 3503086

RED MRLA 61X	RED MRLA ECONOMY 810	Data											
RED WINDY HILL ZEPPELIN 1240	RED MRLA MISS 580U	BW 96											
RED WINDY HILL M NALPOEON 50	RED BAR-E-L NAPOLEON 4N	WW 675											
	RED EGGEN GRAVITY 28JMISS 11	YW 1338											
RED DWAJO JOKERS WILD 47S	RED BCAR WILD CARD	%IMF 4.21											
RED CRIPPS EMULY 820U	RED TOWAW AMBER 155K	REA 14.78											
RED CRIPPS EMULY 621S	RED SSS BEDROCK 68H	FAT 0.48											
	RED SSS EMULY 699F												
CED	BW	WW	YW	MILK	ME	HPG	CEM	STAY	MARB	YG	CW	REA	FAT
2	2.6	63	93	18	-13	8	5	12	0.32	0.08	29	0.03	.01

Smoky Y Zeppelin 571C is a tremendous herd sire opportunity. He is a leading individual from the Smoky Y spring calf crop, and he is powerful in all dimensions. He has balanced numbers and performance traits, and he has one of the intriguing pedigrees and generational derivation. He is steeped in some of the strongest family lines that are well in place at Smoky Y Ranch.

The deep-red-colored early March bull has a strong presence, and he is strictly herd bull material. He offers immense performance and strong evidence of his carcass merit through his exceptional recorded weights and scan data.

54 SMOKY Y ZEPPELIN 524C

3/22/15 1A-100% 3503103

RED MRLA 61X	RED MRLA ECONOMY 810	Data											
RED WINDY HILL ZEPPELIN 1240	RED MRLA MISS 580U	BW 78											
RED WINDY HILL M NALPOEON 50	RED BAR-E-L NAPOLEON 4N	WW 548											
	RED EGGEN GRAVITY 28JMISS 11	YW 1136											
RED GEIS KNIGHT HAWK 14'02	RED KBJ KNIGHT 17J	%IMF 4.18											
SOO LINE MS RABSTAR 5028	RED GEIS SAMARIE 234'96	REA 12.30											
RED DKF MISS RAB-STAR 53H	RED BVR RAB-STAR 56C	FAT 0.39											
	RED DKF MOONBEAM 1X												
CED	BW	WW	YW	MILK	ME	HPG	CEM	STAY	MARB	YG	CW	REA	FAT
5	0.2	51	75	12	-12	9	5	13	0.34	0.02	15	-0.06	-0.1

Smoky Y Zeppelin 524C has been a stand out among many of the bulls offered in this bull sale. The long geared and correctly moving bull has been one of the excellently developing bulls. His dam, Soo Line MS Rabstar 502B, is one of the older breeding females in the Smoky Y breeding program. Years of selection pressure has been realized in the pedigree and performance of this yearling bull. TW.

SMOKY Y RANCH RED ANGUS



55 SMOKY Y ZEPPELIN 511C

2/24/15 2-100% 3503088

RED MRLA 61X	RED MRLA ECONOMY 810	Data BW 88 WW 597 YW 1251 %IMF 4.31 REA 15.18 FAT 0.58
RED WINDY HILL ZEPPELIN 1240	RED MRLA MISS 580U	
RED WINDY HILL M NALPOEON 50	RED BAR-E-L NAPOLEON 4N	
	RED EGGEN GRAVITY 28JMISS 11	
WIWA CREEK RITO 43'06	BAR SS RITO 113K	
WINDY HILL MOONBEAM 814U	WIWA CREEK EVERGREEN 23J 37'	
SOO LINE MS RABSTAR 5028	RED GEIS KNIGHT HAWK 14'02	
	RED DKF MISS RAB-STAR 53H	

CED	BW	WW	YW	MILK	ME	HPG	CEM	STAY	MARB	YG	CW	REA	FAT
4	0.1	43	66	18	-12	9	4	11	0.41	0.08	10	0.15	.05

Smoky Y Zeppelin 511C has scanned one of the largest REA measurements in the sale offering. He is genetically empowered with some of the greatest blood in the industry, and he excels in performance, correctness and total scan data from end to end. Completeness and soundness is available through this young breeding bull that has the credentials to back up the genetic heritage in his pedigree.

56 SMOKY Y ZEPPELIN 535C

3/16/15 1A-100% 3503095

RED MRLA 61X	RED MRLA ECONOMY 810	Data BW 86 WW 540 YW 1101 %IMF 4.14 REA 13.01 FAT 0.35
RED WINDY HILL ZEPPELIN 1240	RED MRLA MISS 580U	
RED WINDY HILL M NALPOEON 50	RED BAR-E-L NAPOLEON 4N	
	RED EGGEN GRAVITY 28JMISS 11	
RED PEBBLERIDGE BLACK SUNRIS	WIWA CREEK STOCKMAN 14'99	
WINDY HILL MS STOCKMAN644S	CALILAMERE ROSEGAY 2E	
RED EGGEN POUND MAKER MISS 3	RED GEIS POUND MAKER 22'96	
	KALWAY STAR'S QUEEN	

CED	BW	WW	YW	MILK	ME	HPG	CEM	STAY	MARB	YG	CW	REA	FAT
2	1.0	51	72	15	-13	9	3	10	0.28	0.00	15	-0.07	-.01

Smoky Y Zeppelin 535C is bred similarly to all the sons of Zeppelin that are offered here. When considering the performance and carcass traits, he confirms the top billing from his sire. He and his half brothers offer get-nowhere-else bloodlines in the Red Angus industry. TW.

SMOKY Y RANCH RED ANGUS



LOT 57

57 SMOKY Y RIGHT KIND 536C

3/17/15 1A-100% 3503037

BUF CRK THE RIGHT KIND U199 BUF CRK LANCER R017
PIE RIGHT KIND 3120 BUF CRK SHOSHONE R353
 PIE RUBY 5020 PIE ATLANTIC 2204
 PIE MR RAMBO TUO 072

RED LAZY MC COWBOY CUT 26U RED LAZY MC STOUT 30S
CAMP 1A CC CRYSTAL Y150 RED LAZY MC STAR 185M
 CAMP 1A MISS CRYSTAL R511 LCC MAJOR LEAGUE A502M
 LSF CRYSTAL J1350

GED	BW	WW	YW	MILK	ME	HPG	CEM	STAY	MARB	YG	CW	REA	FAT	Data
2	0.1	66	100	18	-1	12	3	10	0.32	0.19	30	0.03	.05	BW 89
														WW 695
														YW 1295
														%IMF 3.64
														REA 13.92
														FAT 0.54

Selling full possession and 2/3 semen interest. Smoky Y Right Kind 536C is the son of PIE Right Kind 3120, one of the newest herd sires in the Smoky Y breeding herd. The moderately-framed progeny of the son of Buffalo Creek The Right Kind U199 are significant parts of the Smoky Y Bull offering this year. The mid-March-born bull is perfectly conformed, and he is one of the highlighted bulls that sells.

His dam, Camp 1A CC Crystal Y150, is a favorite female in the Smoky Y breeding herd. She is from the Crystal cow family, and she is sired by the popular Red Lazy MC Cowboy Cut 26U. She, in turn, is from a daughter of LCC Major League A502M that represents the most proven and highly sought mainline genetics.



RED LAZY MC COWBOY CUT 26U
 MATERNAL GRANDSIRE

SMOKY Y RANCH RED ANGUS



58 SMOKY Y RIGHT KIND 500C

3/07/15 1A-100% 3503060

BUF CRK THE RIGHT KIND U199 PIE RIGHT KIND 3120 PIE RUBY 5020		BUF CRK LANCER R017 BUF CRK SHOSHONE R353 PIE ATLANTIC 2204 PIE MR RAMBO TUO 072		Data BW 89										
PERKS ADVANCE 121R CAMP 1A GALEE U879 BIEBER GALEE 7927		RBJR ADVANCE A709 PERKS MISS RAMBO 8105 BIEBER RED MOON 6042 BIEBER GALEE 4493		WW 604										
				YW 1301										
				%IMF 3.08										
				REA 13.56										
CED	BW	WW	YW	MILK	ME	HPG	CEM	STAY	MARB	YG	CW	REA	FAT	FAT
3	0.9	61	106	14	2	10	4	8	0.18	0.11	35	-0.04	.00	0.37

Smoky Y Right Kind 500C is a high performing son of PIE Right Kind 3120. His performance and scan data are consistent when it compares to his phenotype. The big, stout bull has the look of the muscle and thickness the scales and ultrasound confirm. The influence of PIE Right Kind 3120 has resulted into a nice group of replacement females that are mates to the bulls that sell in the offering.

New and purposeful blood from this line has positively influenced the bull sale this offering and the entire Smoky Y breeding herd.

59 SMOKY Y RIGHT KIND 555C

3/27/15 1A-100% 3503054

BUF CRK THE RIGHT KIND U199 PIE RIGHT KIND 3120 PIE RUBY 5020		BUF CRK LANCER R017 BUF CRK SHOSHONE R353 PIE ATLANTIC 2204 PIE MR RAMBO TUO 072		Data BW 90										
1DRA HIGH CAPACITY 9007 CAMP 1A GALEE Y1544 BIEBER GALEE 7927		UBAR HIGH CAPACITY 224 FORSTER COPRQUEEN 7168 BIEBER RED MOON 6042 BIEBER GALEE 4493		WW 636										
				YW 1248										
				%IMF 4.31										
				REA 12.58										
CED	BW	WW	YW	MILK	ME	HPG	CEM	STAY	MARB	YG	CW	REA	FAT	FAT
3	0.9	62	97	15	3	11	4	8	0.50	0.17	29	-0.20	.01	0.42

Smoky Y Right Kind 555C has balanced EPD numbers, and he has been one of the several sons of PIE Right Kind 3120 that have made the grade to be included in the bull sale. He adds a different pedigree with dependable statistics to the bull sale line up. All the half brothers to this bull that sells as lot 59 are moderate and are packed with muscle and red meat.

The half sister replacement females at Smoky Y are among the best in the replacement pen.

SMOKY Y RANCH RED ANGUS



60 SMOKY Y RIGHT KIND 582C

4/08/15 1A-100% 3503053

BUF CRK THE RIGHT KIND U199		BUF CRK LANCER R017		Data										
PIE RIGHT KIND 3120		BUF CRK SHOSHONE R353		BW										
PIE RUBY 5020		PIE ATLANTIC 2204		80										
		PIE MR RAMBO TUO 072		WW										
				700										
RED FINE LINE MULBERRY 26P		RED COMPASS MULBERRY 449M		YW										
CAMP 1A MARLA Y159		RED DUS FAYETTE 8G		1305										
LCC BLOXY NA496		LMAN ROBIN HOOD 1174B		%IMF										
		LCHMN BLOXY C1176		4.58										
				REA										
				13.98										
CED	BW	WW	YW	MILK	ME	HPG	CEM	STAY	MARB	YG	CW	REA	FAT	FAT
3	-1.1	64	103	19	4	13	8	10	0.54	0.20	30	0.02	.05	0.54

Smoky Y Right Kind 582C is out of a good young female sired by Red Fine Line Mulberry 26P. Several of the best bulls in the sale are in this group of half brothers that sell through this sale. This dark red bull has everything in check.

61 SMOKY Y RIGHT KIND 528C

3/18/15 1A-100% 3503027

BUF CRK THE RIGHT KIND U199		BUF CRK LANCER R017		Data										
PIE RIGHT KIND 3120		BUF CRK SHOSHONE R353		BW										
PIE RUBY 5020		PIE ATLANTIC 2204		85										
		PIE MR RAMBO TUO 072		WW										
				672										
SCHULER CANYON 7746G		BUF CRK CHF 824-1658		YW										
CAMP 1A MISS PRIDE R502		SOR ANKIHW JIMY-2005		1281										
LCC PRIDE LA016		LMAN KING ROB 8621		%IMF										
		LCHMN PRIDE D1122		4.99										
				REA										
				11.64										
CED	BW	WW	YW	MILK	ME	HPG	CEM	STAY	MARB	YG	CW	REA	FAT	FAT
5	-0.1	66	102	17	4	11	4	7	0.64	0.23	30	-0.24	.03	0.48

Smoky Y Right Kind 528C rounds out the registered bulls that are sired by PIE Right Kind 3120. His dam has stood the test of time. She was a part of the original group of females that formed the initial breeding herd at Smoky Y. The best the breed has to offer can be found with this bull and his half brothers. OS Carrier.

62 SMOKY Y RIGHT KIND 512C

3/27/15 3-50% 3503025

BUF CRK THE RIGHT KIND U199		BUF CRK LANCER R017		Data										
PIE RIGHT KIND 3120		BUF CRK SHOSHONE R353		BW										
PIE RUBY 5020		PIE ATLANTIC 2204		89										
		PIE MR RAMBO TUO 072		WW										
				548										
				YW										
				1088										
Non-registered dam				%IMF										
				4.71										
				REA										
				13.78										
CED	BW	WW	YW	MILK	ME	HPG	CEM	STAY	MARB	YG	CW	REA	FAT	FAT
														0.63

Smoky Y Right Kind 512C is a son of PIE Right Kind 3120. His dam is a non registered Red Angus cow.

SMOKY Y RANCH RED ANGUS



ANDRAS FUSION R236 SIRE OF LOTS 63-67

63

SMOKY Y FUSION 547C

1/15/15 1A-100% 3503041

ANDRAS IN FOCUS B175	MYTTY IN FOCUS	Data
ANDRAS FUSION R236	DI ESTONIA 316	
ANDRAS BELLE B167	ANDRAS THUNDER B105	BW
	ANDRAS BELLE 416	60
		WW
		557
		YW
1DRA HIGH CAPACITY 9007	UBAR HIGH CAPACITY 224	1231
SMOKY Y CRYSTAL A362	FORSTER COPPRQUEEN 7168	%IMF
LSF CRYSTAL J1350	LCC HEAVEN OR BUST1000B	3.64
	PARK CRYSTAL C09	REA
		11.84
		FAT
		0.37

CED	BW	WW	YW	MILK	ME	HPG	CEM	STAY	MARB	YG	CW	REA	FAT
13	-3.7	47	84	27	2	9	6	7	0.56	0.13	15	-0.38	-0.1

Smoky Y Fusion 547C is the powerful son of the immensely popular Andras Fusion B175. The January born yearling bull is complete and expressively contains noted muscle mass, depth and is couple with a calving ease birth weight EPD of -3.7 which ranks him in the top 4% of the breed. Many decades of the most rigid genetic solution is noted in the genetic composition of the pedigree of this great breeding bull.

This excellent breeding sire offers breeders one more step toward even more stability and breed perfection. The genetic merging of the popular sire and proven dam has resulted into this complete breeding herd sire. This is a representative of the very finest offered from the Smoky Y breeding program that is producing some of the most noted breeding bulls known throughout the United States.

64

SMOKY Y FUSION 544C

1/29/15 1A-100% 3503058

ANDRAS IN FOCUS B175	MYTTY IN FOCUS	Data
ANDRAS FUSION R236	DI ESTONIA 316	
ANDRAS BELLE B167	ANDRAS THUNDER B105	BW
	ANDRAS BELLE 416	72
		WW
		538
		YW
BFCK CHEROKEE CNYN 4912	BUF CRK CHF 824-1658	1201
CAMP 1A CHER LAN V153	MRM 1431 8611 9109	%IMF
LCHMN LAN H1772	LMAN ROBIN HOOD 1174B	3.57
	DOUBLE FORK 084R	REA
		14.27
		FAT
		0.43

CED	BW	WW	YW	MILK	ME	HPG	CEM	STAY	MARB	YG	CW	REA	FAT
11	-3.0	46	82	28	4	10	1	8	0.52	0.01	15	0.16	.02

Selling full possession and 2/3 semen interest. Smoky Y Fusion 544C is one of the very complete and highly valued breeding bulls offered through this exceptional sale line up. The herd bull is steeped in traditional successful seedstock, and he is from one of the breed's most noted breeding sires, Andras Fusion R236. This powerhouse breeding bull represents yet another avenue from which breed-leading seedstock may be transmitted through the sire genetics of this aspiring genetic piece.

The blood of Andras Fusion R236 offers specialized calving ease genetics harnessed with growth, marbling and maternal traits. His influence has assisted in creating this young bull that excels in body composition, capaciousness, muscle mass and foot quality. A son such as this will help drive the Red Angus breed to a more prominent position within the beef cattle industry in North America.

SMOKY Y RANCH RED ANGUS



LOT 65

66 SMOKY Y FUSION 563C

1/27/15 3-50% 3503032

ANDRAS IN FOCUS B175 MYTTY IN FOCUS
ANDRAS FUSION R236 DI ESTONIA 316
 ANDRAS BELLE B167 ANDRAS THUNDER B105
 ANDRAS BELLE 416

Data
BW
74
WW
668
YW
1258
%IMF
6.62
REA
14.43
FAT
0.43

Non-registered dam

CED	BW	WW	YW	MILK	ME	HPG	CEM	STAY	MARB	YG	CW	REA	FAT

Smoky Y Fusion 563C is a category 3 bull sired by Andras Fusion R236. His dam is a non-registered purebred Red Angus cow.

65 SMOKY Y FUSION 557C

1/23/15 3-50% 3503031

ANDRAS IN FOCUS B175 MYTTY IN FOCUS
ANDRAS FUSION R236 DI ESTONIA 316
 ANDRAS BELLE B167 ANDRAS THUNDER B105
 ANDRAS BELLE 416

Data
BW
85
WW
684
YW
1254
%IMF
4.46
REA
12.27
FAT
0.39

Non-registered dam

CED	BW	WW	YW	MILK	ME	HPG	CEM	STAY	MARB	YG	CW	REA	FAT

Smoky Y Fusion 557C is a category 3 bull sired by Andras Fusion R236. His dam is a non-registered purebred Red Angus cow.

67 SMOKY Y FUSION 575C

1/17/15 3-50% 3503033

ANDRAS IN FOCUS B175 MYTTY IN FOCUS
ANDRAS FUSION R236 DI ESTONIA 316
 ANDRAS BELLE B167 ANDRAS THUNDER B105
 ANDRAS BELLE 416

Data
BW
52
WW
568
YW
1080
%IMF
4.42
REA
11.97
FAT
0.34

Non-registered dam

CED	BW	WW	YW	MILK	ME	HPG	CEM	STAY	MARB	YG	CW	REA	FAT

Smoky Y Fusion 575C is a category 3 bull sired by Andras Fusion R236. His dam is a non-registered purebred Red Angus cow.

SMOKY Y RANCH RED ANGUS



68 SMOKY Y ULTIMATE 530C

1/20/15 1A-100% 3503044

BECKTON NEBULA M045 BROWN ULTIMATE X7752 BROWN MS OBJECTIVE U7837	BECKTON NEPTUNE R2 K065 BECKTON BELGA K285 JL SS OBJECTIVE T510 0T26 BROWN MS ABIGRACE L7730	Data BW 63 WW 654 YW 1264 %IMF 4.08 REA 13.22 FAT 0.42
1DRA HIGH CAPACITY 9007 SMOKY Y HC VALENTINE A371 CAMP 1A CH VALENTINE U870	UBAR HIGH CAPACITY 224 FORSTER COPPRQUEEN 7168 WFRA CHIVALRY 4089 CAMP 1A MISS VALENTINE S115	

CED	BW	WW	YW	MILK	ME	HPG	CEM	STAY	MARB	YG	CW	REA	FAT
7	-2.8	58	96	17	-1	11	4	8	0.63	0.08	23	-0.09	.00

Smoky Y Ultimate 530C is a son of one of the great foundation Red Angus sires, Becton Nebula M045. The famous and highly respected sire contributes substantial performance and breeding value to this individual and the entire Red Angus gene pool. One of his most noted sons is the January-born son that sells here. He is deep flanked, big bodied and high performing. Paternally he represents some of the breed's most keystone genetics.

Smoky Y Valentine A371 is one of the most breed-leading daughters of the respected Valentine cow family that is in place in the cow herd at Smoky Y. Deeply entrenched in the fertility and efficiency of the Smoky Y breeding program is this superbly productive daughter of 1DRA High Capacity 9007.

Smoky Y Ultimate 530C is one of the stand out bulls in the entire set offered on sale day. He is a complete package of the breed's best blood.

69 SMOKY Y ULTIMATE 519C

1/19/15 1A-100% 3503042

BECKTON NEBULA M045 BROWN ULTIMATE X7752 BROWN MS OBJECTIVE U7837	BECKTON NEPTUNE R2 K065 BECKTON BELGA K285 JL SS OBJECTIVE T510 0T26 BROWN MS ABIGRACE L7730	Data BW 54 WW 603 YW 1256 %IMF 5.05 REA 12.90 FAT 0.33
CAMP 1A WESTERN MAN V140 SMOKY Y GALEE A360 CAMP 1A GALEE X049	PIE GET WESTERN 4061 CAMP1A CHER CRYSTAL 425P BROWN COMMITMENT S7206 CAMP 1A GALEE U879	

CED	BW	WW	YW	MILK	ME	HPG	CEM	STAY	MARB	YG	CW	REA	FAT
7	-3.5	53	90	21	-2	12	2	11	0.89	0.04	19	-0.16	-.02

Smoky Y Ultimate 519C is one of the top bulls from an excellent genetic combination. He ranks in the top 4% for Gridmaster and top 3% for marbling EPDs. His -3.5 birth weight EPD makes him a good bull for use on heifers. His genetic combination has provided an impressive data set for balanced trait selection from all aspects of economically important traits.

Smoky Y Galee A360, his dam, is one of the more current versions of the Galee cow family at Smoky Y. Significant performance and quality has been generated from this important cow family line.

SMOKY Y RANCH RED ANGUS



70 SMOKY Y PREMIER 515C

1/22/15 1A-100% 3503046

BECKTON NEBULA P P707 BROWN PREMIER X7876 BROWN MS DESTINATION T7664		BECKTON NEBULA M045 BECKTON LANA M809 EP 5L DESTINATION 893-6215 BROWN MS JULIA M7788		Data BW 70 WW 649 YW 1341 %IMF 4.21 REA 12.45 FAT 0.43										
1DRA HIGH CAPACITY 9007 SMOKY Y DINA A363 CAMP 1A DINA U864		UBAR HIGH CAPACITY 224 FORSTER COPPRQUEEN 7168 WFRA CHIVALRY 4089 CAMP 1A MISS DINA R510												
CED	BW	WW	YW	MILK	ME	HPG	CEM	STAY	MARB	YG	CW	REA	FAT	
6	-2.1	72	112	10	2	11	4	11	0.77	0.14	33	-0.08	.01	

Smoky Y Premier 515C is a trait-leading yearling bull from some of the most accomplished genetics available in the breed. The genetic blending of both sire and dam has resulted into an exceptional breeding bull available in the breed. His sire, Brown Premier X7876, the son of Beckton Nebula P707, has generated extraordinary genetic amplitude for the entire industry. This bull ranks in the top 7% for weaning weight and 9% for yearling weight EPDs. Furthermore, he ranks in the top 8% for Gridmaster EPD.

Smoky Y Dina A363 is one of the members of the strong Dina cow family within the cow herd at Smoky Y Red Angus. The son of this great bull is one of the high performing herd sires in the sale offering.

71 SMOKY Y PREMIER 556C

1/24/15 1A-100% 3503059

BECKTON NEBULA P P707 BROWN PREMIER X7876 BROWN MS DESTINATION T7664		BECKTON NEBULA M045 BECKTON LANA M809 EP 5L DESTINATION 893-6215 BROWN MS JULIA M7788		Data BW 90 WW 639 YW 1311 %IMF 3.85 REA 13.28 FAT 0.35										
LMAN ROBIN HOOD 1174B CAMP 1A FAY V124 LSF RED FAYE 4928		LMAN KING ROB 8621 LEACHMAN PRILARK BRCK CHEROKEE CNYN 4912 RD FAY 7748												
CED	BW	WW	YW	MILK	ME	HPG	CEM	STAY	MARB	YG	CW	REA	FAT	
3	-0.0	73	112	14	6	12	5	11	0.70	0.02	36	0.12	-.02	

Smoky Y Premier 556C is a trait-leading bull in six traits. He ranks in the top 13% for Gridmaster, 7% for weaning weight, 8% for yearling weight, 15% for Heifer pregnancy, 10% for marbling and 9% for carcass weight EPDs. His sire is one of the most highly utilized breeding bulls in the industry, and Brown Premier X7876 is one of the most highly utilized breeding bulls through artificial insemination.

This bull represents some of the great lines in the breed, and his dam traces to the great breeding bull, LMAN Robin Hood 1174B.

72 SMOKY Y PREMIER 551C

1/22/15 1A-100% 3503039

BECKTON NEBULA P P707 BROWN PREMIER X7876 BROWN MS DESTINATION T7664		BECKTON NEBULA M045 BECKTON LANA M809 EP 5L DESTINATION 893-6215 BROWN MS JULIA M7788		Data BW 60 WW 577 YW 1124 %IMF 4.93 REA 12.15 FAT 0.28										
LCC RIBEYE A133L SMOKY Y LAN A346 CAMP 1A CHER LAN X034		BFCK CHEROKEE CNYN 4912 LCHMN LARKABA J1263 BRCK CHEROKEE CNYN 4912 LCHMN LAN H1772												
CED	BW	WW	YW	MILK	ME	HPG	CEM	STAY	MARB	YG	CW	REA	FAT	
8	-4.4	55	77	17	3	12	-1	13	0.92	-0.14	9	0.13	-.04	

Smoky Y Premier 551C is one of three sons of Brown Premier X7876 in the offering of bulls. The multi-trait leader ranks in the top 8% for Gridmaster, top 8% for birth weight, top 3% for marbling and top 8% for yield grade EPDs. His dam is a trait-leading female sired by LCC Ribeye A133L.

Years of selective breeding making this one of the top consistent breeding bulls. All his statistics for both EPDs and performance and carcass traits are right in line. He will make an excellent bull for use on heifers.

SMOKY Y RANCH RED ANGUS



LOT 73

73 SMOKY Y OSCAR 501C

2/20/15 1A-100% 3503056

RED CROWFOOT OLE'S OSCAR MLK CRK CUB 722
FEDDES OSCAR X28 RED CROWFOOT OMEGA 9179J
 FEDDES SLEEK 806 BIEBER ROMERO 9136
 FEDDES SLEEK 2S

CAMP 1A MR ADVANCE T135 PERKS ADVANCE 121R
MISS X047 BIEBER GALEE 7927
 BUF CRK CHRIS L352 LCHMAN ABOVEHEAVEN1018F
 BUF CRK CHRIS 3694

CED	BW	WW	YW	MILK	ME	HPG	CEM	STAY	MARB	YG	CW	REA	FAT	Data
10	-2.1	62	104	23	3	8	8	9	0.42	0.18	29	-0.07	.03	BW 77
														WW 613
														YW 1297
														%IMF 3.64
														REA 13.62
														FAT 0.48

Smoky Y Oscar 501C is a son of Feddes Oscar X28, the emerging breeding bull sired by Red Crowfoot Ole's Oscar. Nicely balanced EPDs make him a nicely balanced herd bull for many of the most economically important traits. He ranks in the top 11% for calving ease direct and 6% for calving ease maternal EPDs. This high performing bull is from one of the top cow families in the breeding herd. He has a -2.1 birth weight EPD, and will be a good bull for use on heifers.

74 SMOKY Y OSCAR 533C

2/21/15 3-50% 3503030

RED CROWFOOT OLE'S OSCAR MLK CRK CUB 722
FEDDES OSCAR X28 RED CROWFOOT OMEGA 9179J
 FEDDES SLEEK 806 BIEBER ROMERO 9136
 FEDDES SLEEK 2S

Non registered dam

CED	BW	WW	YW	MILK	ME	HPG	CEM	STAY	MARB	YG	CW	REA	FAT	Data
														BW 66
														WW 630
														YW 1153
														%IMF 4.40
														REA 13.74
														FAT 0.46

Smoky Y Oscar 533C is a category 3 bull sired by Feddes Oscar X28. His dam is a non-registered Red Angus female. OS Carrier.

SMOKY Y RANCH RED ANGUS



WEBR TC CARD SHARK 1015 SIRE OF LOTS 75-76

76 SMOKY Y CARD SHARK 574C

2/22/15 1A-100% 3503036

WEBR DOC HOLLIDAY 2N	MLK CRK CUB 722	Data
WEBR TC CARD SHARK 1015	WEBR MS DOLLY 1L	
PFFR MS NYACK 237	GLACIER NYACK 688	78
	RRM MISS BONUS 506	WW
		643
SCHULER CANYON 7746G	BUF CRK CHF 824-1658	YW
CAMP 1A MADAM EMU-MAR	SOR ANKIHW JIMY-2005	1220
LONK EMU-MAR K021	LCHMN GRANDCANYON 1244G	%IMF
	BTH MISS HISCOPE 53	3.77
		REA
		11.95

CED	BW	WW	YW	MILK	ME	HPG	CEM	STAY	MARB	YG	CW	REA	FAT
2	-1.2	61	92	17	6	13	4	6	0.35	0.13	23	-0.11	.02

Smoky Y Card Shark 574C is one of two sons of WEBR TC Card Shark 1015 in this years bull offering. Some of the most highly sought genetics in the industry are progeny from teh great breeding bull. His dam is a Camp 1A-bred female that was a part of the original group of females that helped form the Smoky Y breeding herd.

77 SMOKY Y ABOUT TIME 559C

1/29/15 1A-100% 3503047

HXC JACKHAMMER 8800U	HXC HEMI 4400P	Data
AHL ABOUT TIME 113Y	HXC JOLENE 301N	
AHL DUCHESS 9U	MYTTY IN FOCUS	69
	AHL DUCHESS 106P	WW
		585

IDRA HIGH CAPACITY 9007	UBAR HIGH CAPACITY 224	Data
SMOKY Y MISS CRYSTAL A356	FORSTER COPPRQUEEN 7168	
CAMP 1A MISS ML CRYSTAL S110	LCC MAJOR LEAGUE A502M	69
	LSF CRYSTAL J1350	WW
		585

CED	BW	WW	YW	MILK	ME	HPG	CEM	STAY	MARB	YG	CW	REA	FAT
6	-2.7	64	102	14	2	12	2	8	0.72	0.03	27	0.07	.00

Smoky Y About Time 559C is sired by AHL About Time 113Y, the son of HXC Jackhammer 8800U. He has impressive numbers and his actual performance indicates he will sire lots of performance in his calf crop. He is the most uniquely bred bull in the entire sale offering.

75 SMOKY Y CARD SHARK 566C

2/24/15 1A-100% 3503051

WEBR DOC HOLLIDAY 2N	MLK CRK CUB 722	Data
WEBR TC CARD SHARK 1015	WEBR MS DOLLY 1L	
PFFR MS NYACK 237	GLACIER NYACK 688	79
	RRM MISS BONUS 506	WW
		650
CAMP 1A MR ADVANCE T135	PERKS ADVANCE 121R	YW
CAMP 1A MISS OLIVE 218Z	BIEBER GALEE 7927	1319
CAMP 1A MISSOLIVE S128	WFRA CHIVALRY 4089	%IMF
	LCC OLIVE LA976	4.62
		REA
		13.88

CED	BW	WW	YW	MILK	ME	HPG	CEM	STAY	MARB	YG	CW	REA	FAT
2	-1.1	61	101	17	6	12	6	7	0.53	0.17	29	0.12	.05

Smoky Y Card Shark 566C is sired by the popular breeding bull, WEBR TC Card Shark 1015. The yearling bull is a combination of the best phenotype and genotype in the breed. His dam is one of the original breeding females that helped found the Smoky Y breeding herd. Consistent breeding and genetic combinations make this one of the top bulls for a progressive breeding herd.

SMOKY Y RANCH RED ANGUS

78 SMOKY Y OPTIMISM 564C

2/16/15 1B-99.8% 3503048

LSF OPTIMISM 1107Y PIE OPTIMISM 3285 PIE JULY DALLES 078	BECKTON EPIC R397 K LSF COUNTESS 925R U8133 HXC MAGNUM 4464P TPIE JULY DALLES 842	Data BW 81 WW 565 YW 1073 %IMF 4.03 REA 13.26 FAT 0.37
MESSMER PACKER S008 SMOKY Y MISS REGUS A370 CAMP 1A REGUS U871	MESSMER JOSHUA 019P MESSMER MILLIE 124P CAMP 1A MR LANCER GC 482P BSF REGUS L031 HR	

CED	BW	WW	YW	MILK	ME	HPG	CEM	STAY	MARB	YG	CW	REA	FAT
4	-1.0	51	72	17	3	12	2	14	0.54	-0.04	12	0.27	.02

Smoky Y Optimism 564C is a mid-February yearling bull sired by PIE Optimism 3285, from some of the strongest genetics from the Pieper Red Angus program. This category 1B commercial bull is from a Messmer Packer 5008-sired dam. Good EPD numbers and performance all the way down the line. Consistency of calf crop will result with this good yearling bull.

79 SMOKY Y OPTIMISM 541C

2/02/15 1A-100% 3503045

LSF OPTIMISM 1107Y PIE OPTIMISM 3285 PIE JULY DALLES 078	BECKTON EPIC R397 K LSF COUNTESS 925R U8133 HXC MAGNUM 4464P TPIE JULY DALLES 842	Data BW 65 WW 549 YW 1094 %IMF 4.45 REA 13.63 FAT 0.38
HXC CONQUEST 4405P SMOKY Y MISS LANA A361 CAMP 1A MISS LANA S207	BECKTON JULIAN GG B571 HXC ELLIE MAY MA638 CAMP 1A MR LANCER GC 482P LCHMN LAN H1772	

CED	BW	WW	YW	MILK	ME	HPG	CEM	STAY	MARB	YG	CW	REA	FAT
8	-3.7	48	72	21	2	7	3	14	0.65	-0.04	8	0.19	.01

Smoky Y Optimism 541C is sired by the significant breeding bull, PIE Optimism 3285. His dam is a performance-oriented daughter of HXC Conquest 4405P, and is from the good Camp 1A-bred cow. Fresh and consistent blood is made available through this young impressive bull. Strong performance breeding is here.

80 SMOKY Y ALL RIGHT 539C

4/04/15 1A-100% 3503040

LOOSLI RIGHT KIND 166 PIE ALL RIGHT 3007 PIE LAKOTA LOGAN 062	BUF CRK THE RIGHT KIND U199 LOOSLI CHATO 210 PIE GRIDMASTER 589 TPIE LAKOTA LOGAN 8113	Data BW 69 WW 601 YW 1130 %IMF 3.72 REA 13.51 FAT 0.23
HXC CONQUEST 4405P SMOKY FAY A348 CAMP 1A FAY V124	BECKTON JULIAN GG B571 HXC ELLIE MAY MA638 LMAN ROBIN HOOD 1174B LSF RED FAYE 4928	

CED	BW	WW	YW	MILK	ME	HPG	CEM	STAY	MARB	YG	CW	REA	FAT
6	-1.5	55	85	21	4	7	4	11	0.43	-0.05	18	0.02	-.03

Smoky Y All Right 539C is one of two sons of Pie All Right 3007 in this year's sale offering. His dam is on of the good milking daughters of HXC Conquest 4405P. Decades of selection and breeding has contributed to the quality of this good son of All Right.

81 SMOKY Y ALL RIGHT 521C

3/16/15 3-50% 3503024

LOOSLI RIGHT KIND 166 PIE ALL RIGHT 3007 PIE LAKOTA LOGAN 062	BUF CRK THE RIGHT KIND U199 LOOSLI CHATO 210 PIE GRIDMASTER 589 TPIE LAKOTA LOGAN 8113	Data BW 87 WW 538 YW 1120 %IMF 3.29 REA 13.81 FAT 0.41
Unregistered Dam		

CED	BW	WW	YW	MILK	ME	HPG	CEM	STAY	MARB	YG	CW	REA	FAT

Smoky Y All Right 521C is a category 3 breeding bull from a non-registered purebred Red Angus dam.

82 SMOKY Y MR. DETOUR 510C

4/04/15 3-50% 3503026

RED LAZY MC CC DETOUR 2W TMAS MR DETOUR 3003A PZC LANA LYNN 1961 ET	RED RMJ REDMAN 1T RED LAZY MC BESS 12S RED NORTHLINE FAT TONY 605U WHITESTONE LANA V150	Data BW 71 WW 492 YW 1012 %IMF 3.03 REA 12.91 FAT 0.56
Unregistered Dam		

CED	BW	WW	YW	MILK	ME	HPG	CEM	STAY	MARB	YG	CW	REA	FAT

Smoky Y Mr. Detour 510C is a category 3 bull sired by TMAS Mr. Detour 3003A. His dam is a non-registered Red Angus female.

SMOKY Y RANCH RED ANGUS COMMERCIAL FEMALES

75 Red Angus Commercial Pairs

All females have their first spring-born heifer calves at side.
Most of the calves are sired by Feddes Oscar X28. All are PI tested.

45 Black Angus Commercial Females

Yearling heifers born in April. Pelvic measured and PI tested.

Red Angus Commercial Pairs. They will sell in groups of 5.

Group 1:

Group 2:

Group 3:

Group 4:

Group 5:

Group 6:

Group 7:

Group 8:

Group 9:

Group 10:

Group 11:

Group 12:

Group 13:

Group 14:

Group 15:

Black Angus Commercial heifers. They will sell in groups of 5.

Group 1:

Group 2:

Group 3:

Group 4:

Group 5:

Group 6:

Group 7:

Achieve it!

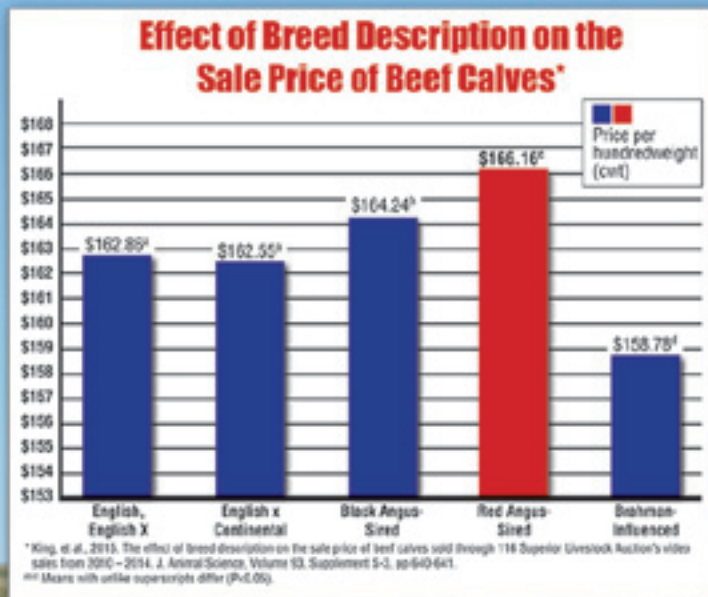
RETURN ON INVESTMENT

Red Angus genetics will improve your return on investment!



"For 10 to 15 years all the buyers ever talked about was black calves, and the black calves always brought more than everything else. Now I can honestly say that good Red Angus calves outsell the black calves and I know the Red Angus bred heifers will outsell black Angus bred heifers of equal quality every day."

— Jim Davis, Superior Livestock Auction



Independent research shows Red Angus-sired calves sold for a higher price than all other breed groups. Red Angus bulls make a positive difference in your breeding program's bottom line.

Invest in your future today!

Red Angus Marketing Programs

- Free-Enrollment Tag Programs
- Dedicated Feeder Calf Sales
- Free Marketing Assistance from RAAA Staff
- Red Angus Grids
 - Tyson's Choice+ Premium Grid
 - Greater Omaha's G.O. Red Grid

Contact the Association today for more information on achieving the most return on your Red Angus investment.

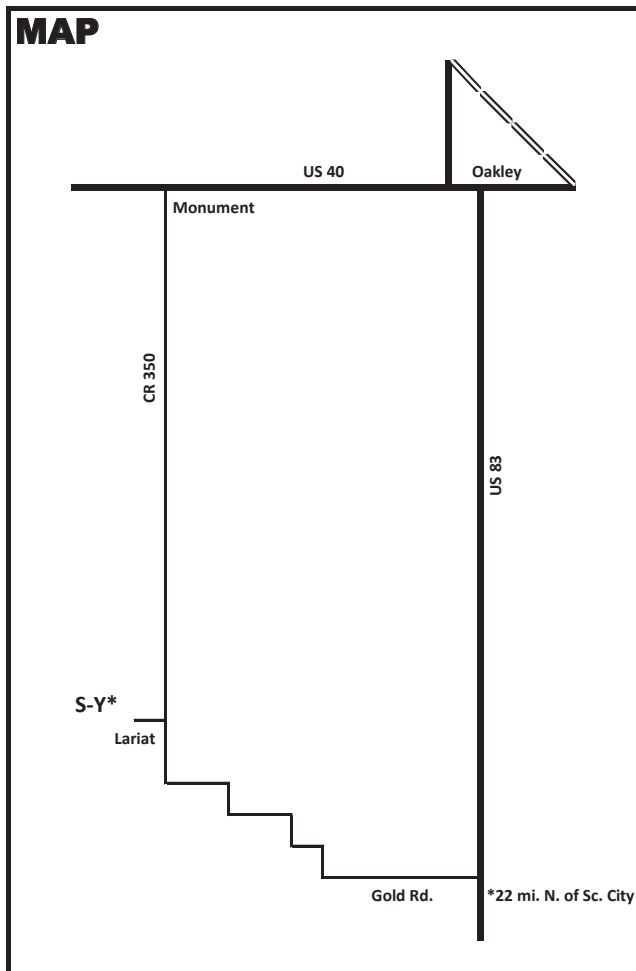
Ranch Tested. Rancher Trusted.

Red Angus

RedAngus.org
(940) 387-3502



MAP



DIRECTIONS TO SMOKY Y RANCH

*From the west edge of Monument on Hwy. 40,
turn south on C.R. 350 for 17 miles until you cross the
Smoky River, the next road south is Lariat Rd,
turn west 1 mile, the new facilities are on the North side.*

Distance to Oakley: 25 miles; to Scott City: 35 miles

Thank You for coming!



**KK SEEDSTOCK CONSULTANTS
SPECIALIZED SALES**
2300 Monument Ave., Richmond, VA 23220
Keith Kisse • Cell: 817-821-6263
Ph: 804-353-2220 • Fax: 804-353-2221
email: kkseedstock@comcast.net
www.kkseedstock.com

PRESORTED
FIRST-CLASS MAIL
U.S. POSTAGE PAID
Slate Group



SMOKY Y RANCH

Annual Production Sale

